



# KC CAPS 2016

RETAIL QUALITY • SERVICE • INNOVATION



ATLANTA

CHICAGO

DALLAS

LOS ANGELES

NEW YORK

TORONTO



## LOCATIONS

---



LOS ANGELES

DALLAS

CHICAGO

ATLANTA

TORONTO

NEW YORK

Since 1991, KC Caps has been the leader in the headwear industry not only in quality, but in new unique styles. Our attention to fashion at affordable prices make us second to none. We continue to set market trends with a wide variety of materials, styles and construction features.

Quality, Service and Innovation have always been our goals. We believe you will find them not only in our selection of headwear, but in our friendly and knowledgeable staff as well. KC Caps has one of the largest inventories in America and can deliver the excellence you deserve.

At KC Caps, we have the ability to develop all products in house. Because we own our factories, we have a huge advantage over the competition. With the ability to customize production, we can accommodate each of our customer's needs. We have the resources that allow us to source the best retail quality products and deliver on time in order to exceed your customer's expectations.







## IN-HOUSE EMBROIDERY

KC Caps leads the industry in offering exceptional quality embroidery at competitive prices. Let KC Caps support your quick turnaround needs with our 7-10 day turnaround from receipt of accepted art. KC Caps in-house embroidery service supports both small and large quantity jobs.

Digitizing Professionals are on site for immediate access to fill your clients custom artwork needs. Our state of the art machines can accommodate both flat and 3D embroidery.

Contact any of our customer service representatives in our regional facilities for all the details on placing an order. Don't forget to ask about our embroidery specials to get great pricing on our products with embroidery!



## Flat Bill

Hip Edgy and Hot

6 PANEL

37  
page

## Performance/Sport

Cool & Quick Dry Fabrics

6 PANEL

38  
page

## Washed Cotton

Gently Washed Caps

6 PANEL

41  
page

## Pigment Dye

Casual Outdoor Looks

6 PANEL

46  
page

## Denim

Durable Washed Denim

6 PANEL

47  
page

## ECO Friendly

Green for the Planet

6 PANEL

47  
page

## Canvas

Rugged Canvas Caps

6 PANEL

48  
page

## Leather Closure

Retro Caps

6 PANEL

49  
page

## Cotton Twill

Traditional Cotton Comfort

6 PANEL

52  
page

## Light Brushed

KC's Famous GO-TO Caps

6 PANEL

54  
page

## Middle Brushed

Cloth Strap

6 PANEL

56  
page

6  
page

## NEW 2016 STYLES

Hot Trends and New Basics

10  
page

## NU-FIT®

The Right Fit for the Nu Generation

16  
page

## Zkapz Collection

New Cap Collection

20  
page

## Visor

Perfect for Golf, Sport & Beach Shade

26  
page

## 5 Panel Cotton Twill

Solid Trucker Looks

28  
page

## 5 & 6 Panel Trucker

Trendy Mesh Backs

30  
page

## Patented Caps

Innovative Functional Headwear

31  
page

## Patriotic/USA

Made in USA Products

32  
page

## Fashion cap

Trendy Retro Looks

6 PANEL





60  
page**Heavy Brushed**

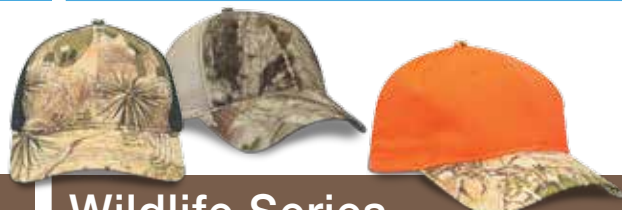
Retail Quality

**6 PANEL**61  
page**Wool Serge**

Team Sport Caps

**6 PANEL**62  
page**Youth Collection**

Teen sport &amp; Casual / Mesh Caps

64  
page**Wildlife Series**

Pre-Embroidered Game &amp; Fowl Caps

69  
page**Camo Collection**

Open Stock Patterns

70  
page**Next Camo**

Next Generation Camo

72  
page**KC Camo**

KCFashion Camo

78  
page**Realtree**

Real Tree Styles

80  
page**Game Guard / Desert Game**

Specialized Brush Patterns

84  
page**King's Camo**

Specialized Fashion Camo

86  
page**Camo Bags**

Coolers, Fanny Packs &amp; Hikers

**Camo Aprons**

Outdoor Cooking Protection

91  
page**Bucket Hats**

Fashion or Fishing Sun Protection

92  
page**Custom Caps**

Ideas &amp; Treatments for Custom

94  
page**Overseas Custom**

Embroidery Applications &amp; Options

96  
page**Racing Pit Caps**

Pre-decorated Racing Caps

100  
page**Aprons**

Deli, Bistro &amp; Restaurant Work Wear

104  
page**Knits & Scarves**

Traditional &amp; Fashionable Winter Wear

106  
page**Napa Blankets**

Warm, Cozy and Functional Blankets

112  
page**Bags**

Reusable Shopping Bags

118  
page**Style Index**122  
page

# KC CAPS TRENDY NEW STYLES FOR 2016

## ZK132



**ZK132**  
BLACK/KHAKI  
p. 17

SELF FABRIC CLOSURE

- Chino washed cotton twill
- Pre-curved contrasting color underbill
- Deluxe 4 needle sweatband
- Self fabric closure with deluxe ring buckle

## ZK213



**ZK213**  
KHAKI/NAVY  
p. 17

SELF FABRIC CLOSURE

- Middle weight brushed cotton twill
- Soft buckram and pre-curved bill
- Deluxe 4 needle sweatband
- Self fabric closure w/shoe buckle & grommet

**NEW**  
CAPS / 2016

## ZK600

**ZK600**  
DK GREEN  
p. 19



LEATHER CLOSURE

- 100% heavy brushed cotton twill
- Buckram and pre-curved bill
- Deluxe leather closure

## ZK810

**ZK810**  
SUN RED  
p. 19



SELF FABRIC CLOSURE

- Washed brushed cotton twill
- Pre-curved bill
- Deluxe 4 needle sweatband
- Self fabric closure with brass buckle

## ZK413



VELCRO CLOSURE

**ZK413**  
TANGERINE  
p. 19, 20

- 100% washed lt. weight brushed cotton twill
- Pre-curved bill
- Self fabric Velcro closure

## 8980



VELCRO CLOSURE

- Faux leathered poly cotton 6 panel cap
- 6 panel pro style constructed cap
- Faux leathered poly cotton
- Pre-curve peak
- Velcro closure

**8980**  
BROWN LEATHER  
p. 36



# NEW KC CAPS CAMO... WE GOT YOU COVERED!

**4720d**

**4720d**  
DESERT GAME  
p. 24, 80



- 55% cotton, 45% polyester blended
- 8 row stitches on the bill
- Pre-curved bill with 4 needle sweatband
- Self fabric Velcro closure

**4740**

**4740**  
SNOW CAMO  
p. 25, 84



- 55% cotton, 45% polyester blended
- 8 row stitches on the bill
- Pre-curved bill with 4 needle sweatband
- Self fabric Velcro closure

**ZK641**

**ZK641**  
NEXT CAMO/KHAKI  
p. 18, 70



**NEW**  
CAMO / 2016

- Unconstructed low profile
- 6 Panel, pre-curved bill
- Sewn eyelets
- Plastic snap closure
- Soft mesh back



**7241d**  
DESERT GAME  
p. 82

- Camo pattern with solid mesh back
- Buckram and pre-curved bill
- Deluxe four needle sweatband
- Poly snap closure

**7241d**



**7451**

❖ US Patent # 6,647,554

**7451**  
KING'S SNOW  
p. 85



- Multiple positions sunglasses holder
- Buckram and pre-curve ved bill
- Mesh back with self fabric Velcro closure



KHAKI

**9150**

**9150**  
SUN BLOCKER SUN SHIELD  
p. 93

- 100% Microfiber
- Moisture wicking sweatband
- UPF 50+ UV ray protection
- Unisex one size fits most
- Protects neck and ears. Foldable easy to carry

**W1745**

**W1745**  
NEXT CAMO  
REVERSIBLE BEANIE  
p. 71, 109



- 100% Polyester Fleece
- Approximately 8 - 8½" long
- Front panel all-purpose pocket with zipper
- Double-faced to enable embroidery on either side with no stitches showing through the reverse
- One size fits most



OLIVE

# KC CAPS NEW COLORS ADDED FOR 2016

## ZK130

ZK130  
CHARCOAL

ZK130  
KHAKE

ZK130  
STONE BLUE

**ZK130**  
VARIETY  
p. 16

- 100% garment washed cotton twill
- Extended bill
- Deluxe 4 needle sweatband
- Leather strap w/brass buckle & grommet

## ZK131

**ZK131**  
VARIETY  
p. 16

ZK131  
KHAKE/  
CHARCOAL

ZK131  
KHAKE/  
ROYAL

## ZK641

**ZK641**  
VARIES  
p. 18

- Unconstructed low profile
- 6 Panel, pre-curved bill
- Sewn eyelets
- Plastic snap closure
- Soft mesh back

**ZK641**  
NEXT CAMO/KHAKE  
p. 18, 70

WHITE/  
BLACK

NEXT CAMO/  
KHAKE



BLACK



WHITE/NAVY



PURPLE/STONE



PINK/STONE



NAVY



OLIVE/STONE

## 6819

**6819**  
WHITE/BLACK  
p. 37, 61



- 100% poly serge twill
- Firm buckram
- Flat bill with Pro-stitching
- Poly snap closure

## 8940



**8940**  
ROYAL/WHITE  
p. 39

- Ultra light brushed front panels with soft buckram
- 4 panel deluxe pique mesh back
- Deluxe 4 needle sweatband
- Self-fabric Velcro closure



NAVY



BROWN



KHAKE



NAVY/WHITE



BLACK/WHITE



GRAY/WHITE



# WE GOT YOU COVERED WITH NEW CAMO COLORS

**7210d**

**7210d**  
DESERT GAME  
p. 80



STONE/  
DESERT GAME

NEON ORANGE/  
DESERT GAME

BLACK/  
DESERT GAME

- Brushed cotton twill
- 4 rows top stitching on bill
- Deluxe 4 needle sweatband
- Game Guard Velcro closure & button

**NEW**  
CAMO / 2016

**7250d**

US Patent # 6,647,554



**7250d**  
DESERT GAME  
p. 82

- Multiple positions sunglasses holder
- Buckram and pre-curve ved bill
- Mesh back with self fabric Velcro closure

**7280d**

**7280d**  
DESERT GAME  
p. 82



- Brushed cotton twill
- Self fabric Velcro closure
- Soft buckram and pre-curved bill
- 6 row stitching on bill

**7440**

**7440**  
KINGS CAMO  
p. 84



SNOW CAMO/  
WHITE

SNOW CAMO/  
BLACK

- King's Camo front panel with camo under bill
- Buckram and pre-curved bill
- Mesh back and Camo Velcro closure

**7480**

**7480**  
KINGS CAMO  
p. 85



- King's Camo poly twill
- 6 rows stitches on bill
- Buckram and pre-curved bill
- Self fabric Velcro closure

# NU-FIT® COLLECTION

## 2000S



US Patent # 6,131,202

2000S		NU-FIT® PRO STYLE COTTON SPANDEX FITTED CAP		
QUANTITY	72pcs	144pcs	288pcs (3A)	
Blank (pcs)	\$6.58	\$6.38	\$5.98	
Emb 5k sts	\$10.56	\$9.96	\$9.36	



BACK

- 96% cotton twill 4% spandex
- Buckram and pre-curved bill
- Self spandex stretch sweatband
- Gray underbill
- size: (S/M 6¾ - 7¼) • (L/XL 7½ - 7⅝)

OLIVE



STONE



WHITE



GRAPHITE



NAVY



ROYAL



BLACK



DK GREEN



MAROON



RED

## 2000T



US Patent # 6,131,202

2000T		NU-FIT® PRO STYLE COTTON SPANDEX FITTED CAP		
QUANTITY	72pcs	144pcs	288pcs (3A)	
Blank (pcs)	\$6.58	\$6.38	\$5.98	
Emb 5k sts	\$10.56	\$9.96	\$9.36	



BACK

- 96% cotton twill 4% spandex
- Buckram and pre-curved bill
- Self spandex stretch sweatband
- size: (S/M 6¾ - 7¼) • (L/XL 7½ - 7⅝)

DARK GREEN/  
KHAKE



WHITE/BLACK



GRAPHITE/BLACK



BLACK/KHAKE



NAVY/KHAKE



STONE/BLACK



STONE/RED



GRAY/BLACK



MAROON/KHAKE



STONE/NAVY



STONE/DK GREEN



# NU-FIT® COLLECTION

**2001**



BACK

RED



US Patent # 6,131,202

**2001** NU-FIT® UNCONSTRUCTED COTTON FITTED CAP

QUANTITY	72pcs	144pcs	288pcs (3A)
Blank (pcs)	\$6.58	\$6.38	\$5.98
Emb 5k sts	\$10.56	\$9.96	\$9.36

- 96% cotton twill 4% spandex
- Self spandex stretch sweatband
- Soft buckram and pre-curved bill
- size: (S/M 6¾ - 7¼) • (L/XL 7½ - 7¾)



**2013**



BACK

ROYAL/WHITE



US Patent # 6,571,396

**2013** NU-FIT® CONSTRUCTED HEAVY BRUSHED FITTED CAP

QUANTITY	72pcs	144pcs	288pcs (3A)
Blank (pcs)	\$6.58	\$6.38	\$5.98
Emb 5k sts	\$10.56	\$9.96	\$9.36

- Heavy brushed cotton
- NU-FIT logo spandex sweatband
- Buckram and pre-curved bill w/piping
- size: (S/M) • (L/XL)



**2900**



BACK

WHITE



US Patent # 6,571,396

**2900** NU-FIT® CONSTRUCTED PIQUE MESH SPANDEX FITTED CAP

QUANTITY	72pcs	144pcs	288pcs (3A)
Blank (pcs)	\$7.18	\$6.98	\$6.58
Emb 5k sts	\$11.16	\$10.56	\$9.96

- 100% poly pique mesh
- Buckram and pre-curved bill
- NU-FIT logo spandex sweatband
- Gray underbill

- size: (S/M 6¾ - 7¼) • (L/XL 7½ - 7¾)



# NU-FIT® COLLECTION

**3000**



**3000** NU-FIT® CONSTRUCTED PRO STYLE COTTON SPANDEX FITTED CAP

QUANTITY	72pcs	144pcs	288pcs (3A)
Blank (pcs)	\$6.58	\$6.38	\$5.98
Emb 5k sts	\$10.56	\$9.96	\$9.36



- 96% cotton twill 4% spandex
- Buckram and pre-curved bill
- NU-FIT logo spandex sweatband
- Gray underbill
- size: (S/M 6¼ - 7¼) • (L/XL 7½ - 7⅝)

US Patent # 6,131,202

**3008**



**3008** NU-FIT® CONSTRUCTED WOOL SPANDEX FITTED CAP

QUANTITY	72pcs	144pcs	288pcs (3A)
Blank (pcs)	\$7.18	\$6.98	\$6.58
Emb 5k sts	\$11.16	\$10.56	\$9.96



RED

- Acrylic wool with 2% spandex
- Buckram and pre-curved bill
- NU-FIT logo spandex sweatband
- Gray underbill
- size: (S/M 6¼ - 7¼) • (L/XL 7½ - 7⅝)

US Patent # 6,131,202



**3009**



**3009** NU-FIT® FLAT BILL STREET WEAR CAP

QUANTITY	72pcs	144pcs	288pcs (3A)
Blank (pcs)	\$7.18	\$6.98	\$6.58
Emb 5k sts	\$11.16	\$10.56	\$9.96



BACK

BLACK

- 85% Acrylic 12% wool 3% spandex
- Buckram and Flat bill
- Nu-fit logo spandex sweatband
- size: (S/M 6¼ - 7¼) • (L/XL 7½ - 7⅝)

US Patent # 6,131,202



# NU-FIT® COLLECTION

**3020**



BACK

TANGERINE



US Patent # 6,131,202



<b>3020</b> NU-FIT® CONSTRUCTED ULTRA LIGHT BRUSHED COTTON SPANDEX FITTED CAP		72pcs	144pcs	288pcs (3A)
QUANTITY				
Blank (pcs)	\$6.58	\$6.38	\$5.98	
Emb 5k sts	\$10.56	\$9.96	\$9.36	

- Ultra light 98% brushed cotton, 2% spandex
- Buckram and pre-curved bill
- NU-FIT logo spandex sweatband
- Gray underbill
- size: (S/M 6¼ - 7¼) • (L/XL 7½ - 7¾)

**3023**



BACK

BLACK/  
RED



US Patent # 6,131,202



<b>3023</b> NU-FIT® CONSTRUCTED ULTRA LIGHT BRUSHED COTTON SPANDEX FITTED CAP		72pcs	144pcs	288pcs (3A)
QUANTITY				
Blank (pcs)	\$6.58	\$6.38	\$5.98	
Emb 5k sts	\$10.56	\$9.96	\$9.36	

- Ultra light 98% brushed cotton, 2% spandex
- Buckram and pre-curved bill with piping
- NU-FIT logo spandex sweatband
- size: (S/M 6¼ - 7¼) • (L/XL 7½ - 7¾)

**3033**



BACK

LT BLUE/  
WHITE



US Patent # 6,131,202

<b>3033</b> NU-FIT® UNCONSTRUCTED ULTRA LIGHT BRUSHED COTTON SPANDEX FITTED CAP		72pcs	144pcs	288pcs (3A)
QUANTITY				
Blank (pcs)	\$6.58	\$6.38	\$5.98	
Emb 5k sts	\$10.56	\$9.96	\$9.36	

- Ultra light 98% brushed cotton, 2% spandex
- Pre-curved sandwich bill
- NU-FIT logo spandex sweatband
- size: (S/M 6¼ - 7¼) • (L/XL 7½ - 7¾)



# NU-FIT® COLLECTION

**3300**



BACK

BROWN



ABRASION



❖ US Patent # 6,131,202

**3300** NU-FIT® UNCONSTRUCTED DELUXE WASHED FITTED CAP WITH ABRASION

QUANTITY	72pcs	144pcs	288pcs (3A)
Blank (pcs)	\$6.58	\$6.38	\$5.98
Emb 5k sts	\$10.56	\$9.96	\$9.36



NAVY



KHAKI



BLACK

- 98% brushed cotton and 2% spandex
- Worn and frayed edge on bill
- NU-FIT logo spandex sweatband
- Pre-curved bill
- size: (S/M 6¾ - 7¼) • (L/XL 7½ - 7⅝)

**3410**



BACK

NAVY



❖ US Patent # 6,131,202

**3410** NU-FIT® CONSTRUCTED AIR-MESH FITTED CAP

QUANTITY	72pcs	144pcs	288pcs (3A)
Blank (pcs)	\$6.58	\$6.38	\$5.98
Emb 5k sts	\$10.56	\$9.96	\$9.36

- Deluxe brushed cotton front panels w/ fashion mesh back
- Buckram and pre-curved bill
- NU-FIT logo spandex sweatband
- Adult: (6¾ - 7½)



BLACK



NAVY



RED



WHITE

**3913**



BACK

STONE/  
NAVY  
adult & youth



❖ US Patent # 6,131,202

**3913** NU-FIT® CONSTRUCTED DELUXE PIQUE MESH SPANDEX FITTED CAP

QUANTITY	72pcs	144pcs	288pcs (3A)
Blank (pcs)	\$6.58	\$6.38	\$5.98
Emb 5k sts	\$10.56	\$9.96	\$9.36

- 100% poly deluxe pique mesh
- NU-FIT logo spandex sweatband
- Buckram and pre-curved sandwich bill
- Adult: (6¾ - 7½) • Youth: (6½ - 7)



BLACK/WHITE  
adult only



NAVY/RED  
adult only



LT BLUE/WHITE  
adult & youth



WHITE/NAVY  
adult & youth

# NU-FIT® COLLECTION

**3920**



BACK

RED

<b>3920</b>	NU-FIT® CONSTRUCTED 8 PANEL MESH SPANDEX FITTED CAP		
QUANTITY	72pcs	144pcs	288pcs (3A)
Blank (pcs)	\$6.58	\$6.38	\$5.98
Emb 5k sts	\$10.56	\$9.96	\$9.36

- 100% polyester and pique mesh
- NU-FIT logo spandex sweatband
- Satin trim top bill with mesh side panels
- Adult: (6 $\frac{7}{8}$  - 7 $\frac{1}{2}$ )



LT BLUE

YELLOW

WHITE



US Patent # 6,131,202

**4013**



NAVY/RED



<b>4013</b>	NU-FIT® PIQUE A MESH SPANDEX FITTED VISOR		
QUANTITY	72pcs	144pcs	288pcs (3A)
Blank (pcs)	\$6.58	\$6.38	\$5.98
Emb 5k sts	\$10.56	\$9.96	\$9.36

- 100% poly deluxe pique mesh
- NU-FIT logo spandex sweatband
- Pre-curved sandwich bill
- Adult: (6 $\frac{7}{8}$  - 7 $\frac{1}{2}$ )



BLACK/WHITE

LT BLUE/WHITE

RED/NAVY

WHITE/NAVY

STONE/NAVY

**9900**



BLACK

- Poly pique mesh/spandex cotton lining
- Cotton elastic NU-FIT sweatband
- Gatsby Cap with snap button

<b>9900</b>	NU-FIT® DELUXE PIQUE MESH SPANDEX GATSBY		
QUANTITY	72pcs	144pcs	288pcs (3A)
Blank (pcs)	\$9.58	\$9.38	\$8.98
Emb 5k sts	\$13.56	\$12.96	\$12.36



ZKAPZ COLLECTION



**ZK130** UNCONSTRUCTED GARMENT WASHED EXTENDED BILL CAP

QUANTITY	72pcs	144pcs	288pcs (3A)
Blank (pcs)	\$6.38	\$6.18	\$5.78
Emb 5k sts	\$10.36	\$9.76	\$9.16

**ZK130**



- 100% garment washed cotton twill
- Extended bill
- Deluxe 4 needle sweatband
- Leather strap w/brass buckle & grommet



WHITE

CARDINAL

DK GREEN

LEMON

ROYAL

OLIVE

MUSTARD

CORAL

TEAL

ZK130 CHARCOAL

ZK130 KHAKI

ZK130 STONE BLUE

LEATHER STRAP

**ZK131**



- 100% garment washed cotton twill
- Extended bill
- Deluxe 4 needle sweatband
- Leather strap w/brass buckle & grommet



KHAKI/CHARCOAL

LEATHER STRAP

KHAKI/ROYAL

**ZK131** UNCONSTRUCTED GARMENT WASHED EXTENDED BILL CAP

QUANTITY	72pcs	144pcs	288pcs (3A)
Blank (pcs)	\$6.38	\$6.18	\$5.78
Emb 5k sts	\$10.36	\$9.76	\$9.16

KHAKI/DK GREEN



**ZK132** UNCONSTRUCTED CHINO WASHED COTTON TWILL CAP

QUANTITY	72pcs	144pcs	288pcs (3A)
Blank (pcs)	\$4.98	\$4.78	\$4.38
Emb 5k sts	\$8.96	\$8.36	\$7.76

**ZKAPZ COLLECTION**

**ZK132**

**NEW**



TANGERINE/NAVY    NAVY/KHAKI    KHAKI/SAGE    PUTTY/BLACK    MUSTARD/NAVY

- Chino washed cotton twill
- Pre-curved contrasting color underbill
- Deluxe 4 needle sweatband
- Self fabric closure with deluxe ring buckle



SELF FABRIC CLOSURE



BLACK/ KHAKI

**ZK210** CONSTRUCTED MIDDLE WEIGHT BRUSHED COTTON TWILL CAP

QUANTITY	72pcs	144pcs	288pcs (3A)
Blank (pcs)	\$4.38	\$4.18	\$3.78
Emb 5k sts	\$8.36	\$7.76	\$7.16



SELF FABRIC CLOSURE



BLACK    DK GREEN    KHAKI

- Middle weight brushed cotton twill
- Soft buckram and pre-curved bill
- Contrasting color button and eyelets
- Deluxe 4 needle sweatband
- Self fabric closure w/shoe buckle & grommet



NAVY

**ZK210**

**ZK213** CONSTRUCTED MIDDLE WEIGHT BRUSHED COTTON TWILL CAP

QUANTITY	72pcs	144pcs	288pcs (3A)
Blank (pcs)	\$5.58	\$5.38	\$4.98
Emb 5k sts	\$9.56	\$8.96	\$8.36



SELF FABRIC CLOSURE



KHAKI/ DK GREEN

BLACK/ KHAKI

KHAKI/ BLACK



WHITE/NAVY

RED/BLACK

NAVY/KHAKI

- Middle weight brushed cotton twill
- Soft buckram and pre-curved bill
- Deluxe 4 needle sweatband
- Self fabric closure w/shoe buckle & grommet



KHAKI/ NAVY

**ZK213**

**NEW**

# ZKAPZ COLLECTION

**ZK641**



POLY SNAP CLOSURE

<b>ZK641</b>	BIO-WASHED COTTON TWILL FRONT W/SOFT MESH SIDES & BACK		
QUANTITY	72pcs	144pcs	288pcs (3A)
Blank (pcs)	\$6.78	\$6.58	\$6.18
Emb 5k sts	\$10.76	\$10.16	\$9.56



WHITE/  
BLACK

- Unconstructed low profile
- 6 Panel, pre-curved bill
- Sewn eyelets
- Plastic snap closure
- Soft mesh back



NEXT CAMO/  
KHAKE



POLY SNAP CLOSURE



BLACK

WHITE/NAVY

PURPLE/STONE

PINK/STONE

NAVY

OLIVE/STONE



BLACK/STONE

NAVY/STONE

CARDINAL/STONE

FOREST GREEN/STONE

COL. BLUE /STONE

KHAKE/STONE



GRAY/STONE

ROYAL/STONE

RED/STONE

BROWN/STONE

TANGERINE/STONE

STONE/STONE

# ZKAPZ COLLECTION

<b>ZK600</b>	<b>CONSTRUCTED HEAVY BRUSHED COTTON TWILL CAP</b>		
QUANTITY	72pcs	144pcs	288pcs (3A)
Blank (pcs)	\$4.38	\$4.18	\$3.78
Emb 5k sts	\$8.36	\$7.76	\$7.16

- 100% heavy brushed cotton twill
- Buckram and pre-curved bill
- Self fabric closure with snap shoe buckle



WHITE

BLACK

NAVY

DK GREEN



DK GREEN



LEATHER CLOSURE

**ZK600**

NEW

<b>ZK810</b>	<b>UNCONSTRUCTED DELUXE COTTON WASHED BRUSHED GAP CAP</b>		
QUANTITY	72pcs	144pcs	288pcs (3A)
Blank (pcs)	\$6.18	\$5.98	\$5.58
Emb 5k sts	\$10.16	\$9.56	\$8.96

- Washed brushed cotton twill
- Deluxe 4 needle sweatband
- Pre-curved bill
- Self fabric closure with brass buckle



BLACK

WHITE

KHAKI

OLIVE

NAVY

ORANGE

STONE

CHARCOAL



SELF FABRIC CLOSURE



SUN RED

**ZK810**

NEW



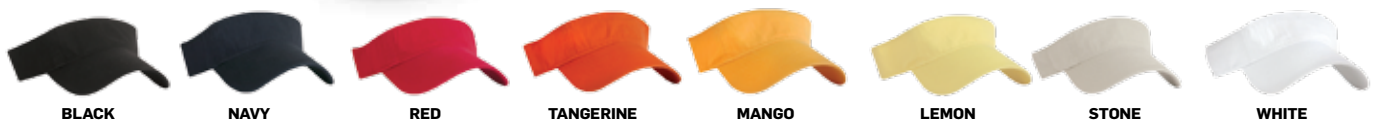
LIME

<b>ZK413</b>	<b>WASHED COTTON TWILL VISOR</b>		
QUANTITY	72pcs	144pcs	288pcs (3A)
Blank (pcs)	\$4.58	\$4.38	\$3.98
Emb 5k sts	\$8.56	\$7.96	\$7.36

- 100% washed lt. weight brushed cotton twill
- Pre-curved bill
- Self fabric Velcro closure



VELCRO CLOSURE



BLACK

NAVY

RED

TANGERINE

MANGO

LEMON

STONE

WHITE

**ZK413**

NEW



# VISORS

**4013**



NAVY/RED

**4013**

NU-FIT® PIQUE A MESH SPANDEX FITTED VISOR

QUANTITY	72pcs	144pcs	288pcs (3A)
Blank (pcs)	\$6.58	\$6.38	\$5.98
Emb 5k sts	\$10.56	\$9.96	\$9.36



- 100% poly deluxe pique mesh
- NU-FIT logo spandex sweatband
- Pre-curved sandwich bill
- Adult: (6 7/8" - 7 3/8")

US PATENT # 6,499,144  
INTERNATIONAL PATENT PENDING  
CANADA PATENT PENDING



BLACK/WHITE



WHITE/NAVY



STONE/NAVY



LT BLUE/WHITE



RED/NAVY

**4100**



BLACK



**4100**

COTTON TWILL VISOR

QUANTITY	72pcs	144pcs	288pcs (3A)
Blank (pcs)	\$2.58	\$2.38	\$1.98
Emb 5k sts	\$6.56	\$5.96	\$5.36

- 100% cotton twill
- Adjustable fabric closure



VELCRO CLOSURE



WHITE

**ZK413**

NEW



TANGERINE

**ZK413**

WASHED COTTON TWILL VISOR

QUANTITY	72pcs	144pcs	288pcs (3A)
Blank (pcs)	\$4.58	\$4.38	\$3.98
Emb 5k sts	\$8.56	\$7.96	\$7.36

- 100% washed lt. weight brushed cotton twill
- Pre-curved bill
- Self fabric Velcro closure



VELCRO CLOSURE



BLACK



NAVY



RED



MANGO



LIME



LEMON



STONE



WHITE

# VISORS

**4130**



PINK



<b>4130</b>	<b>WASHED COTTON TWILL VISOR</b>		
QUANTITY	72pcs	144pcs	288pcs (3A)
Blank (pcs)	\$3.94	\$3.74	\$3.34
Emb 5k sts	\$7.92	\$7.32	\$6.72

- 100% washed lt. weight brushed cotton twill
- Pre-curved bill
- Self fabric Velcro closure



VELCRO CLOSURE



LIME



LEMON



TANGERINE



ROYAL



STONE



MANGO



DARK GREEN



SKY BLUE



BLACK



CARDINAL



NAVY



RED



PINK



WHITE

**4160**



NAVY/  
STONE



STONE/BLACK



BLACK/STONE

- 100% washed heavy cotton twill
- Pre-curved bill
- Self fabric Velcro closure



VELCRO CLOSURE



<b>4160</b>	<b>WASHED HEAVY COTTON TWILL VISOR WITH CONTRASTING STITCH</b>		
QUANTITY	72pcs	144pcs	288pcs (3A)
Blank (pcs)	\$3.94	\$3.74	\$3.34
Emb 5k sts	\$7.92	\$7.32	\$6.72

# VISORS

**4213**



BLACK/  
WHITE



4213 LIGHT WEIGHT BRUSHED COTTON TWILL SANDWICH VISOR			
QUANTITY	72pcs	144pcs	288pcs (3A)
Blank (pcs)	\$3.94	\$3.74	\$3.34
Emb 5k sts	\$7.92	\$7.32	\$6.72



VELCRO CLOSURE

- 100% washed lt. weight brushed cotton twill
- Pre-curved bill
- Self fabric Velcro closure



STONE/NAVY



WHITE/NAVY



NAVY/WHITE



BLACK/WHITE

**4300**



KHAKI/  
SAGE



4300 CHINO WASHED COTTON TWILL VISOR			
QUANTITY	72pcs	144pcs	288pcs (3A)
Blank (pcs)	\$4.10	\$3.90	\$3.50
Emb 5k sts	\$8.08	\$7.48	\$6.88

- 100% washed chino cotton twill
- Pre-curved contrasting color underbill
- Self fabric Velcro closure



UNDERBILL DETAIL



VELCRO CLOSURE



TANGERINE/NAVY



BLACK/KHAKI



SAGE/KHAKI



KHAKI/SAGE



MUSTARD/NAVY



NAVY/KHAKI



WHITE/NAVY



PUTTY/BLACK



# VISORS

**4900**



RED



VELCRO CLOSURE

**4900** DELUXE POLY PIQUE MESH VISOR

QUANTITY	72pcs	144pcs	288pcs (3A)
Blank (pcs)	\$4.26	\$4.06	\$3.66
Emb 5k sts	\$8.24	\$7.64	\$7.04

- 100% polyester pique mesh
- Pre-curved bill
- Self fabric Velcro closure



BLACK



ROYAL



NAVY



WHITE



**FL04**

<b>FL04</b>			
QUANTITY	72pcs	144pcs	288pcs (3A)
Blank (pcs)	\$6.18	\$5.98	\$5.58
Emb 5k sts	\$10.16	\$9.56	\$8.96



**FL08**

<b>FL08</b>			
QUANTITY	72pcs	144pcs	288pcs (3A)
Blank (pcs)	\$6.58	\$6.38	\$5.98
Emb 5k sts	\$10.56	\$9.96	\$9.36



**HR04**

<b>HR04</b>			
QUANTITY	72pcs	144pcs	288pcs (3A)
Blank (pcs)	\$5.78	\$5.58	\$5.18
Emb 5k sts	\$9.76	\$9.16	\$8.56

ALL RACING VISORS HAVE VELCRO CLOSURES



**ST04**

<b>ST04</b>			
QUANTITY	72pcs	144pcs	288pcs (3A)
Blank (pcs)	\$6.18	\$5.98	\$5.58
Emb 5k sts	\$10.16	\$9.56	\$8.96



**TR04**

<b>TR04</b>			
QUANTITY	72pcs	144pcs	288pcs (3A)
Blank (pcs)	\$7.18	\$6.98	\$6.58
Emb 5k sts	\$11.16	\$10.56	\$9.96



**TR08**

<b>TR08</b>			
QUANTITY	72pcs	144pcs	288pcs (3A)
Blank (pcs)	\$6.18	\$5.98	\$5.58
Emb 5k sts	\$10.16	\$9.56	\$8.96

# CAMO VISORS

**4710**



CAMO  
BREAK UP



**4710** CAMO  
BREAK UP VISOR

QUANTITY	72pcs	144pcs	288pcs (3A)
Blank (pcs)	\$5.98	\$5.78	\$5.38
Emb 5k sts	\$9.96	\$9.36	\$8.76

- 55% cotton, 45% polyester blended
- 8 row stitches on the bill
- Pre-curved bill with 4 needle sweatband
- Self fabric Velcro closure



VELCRO CLOSURE

**4720d**



**4720d** DESERT GAME  
CAMO VISOR

QUANTITY	72pcs	144pcs	288pcs (3A)
Blank (pcs)	\$5.98	\$5.78	\$5.38
Emb 5k sts	\$9.96	\$9.36	\$8.76

- 55% cotton, 45% polyester blended
- 8 row stitches on the bill
- Pre-curved bill with 4 needle sweatband
- Self fabric Velcro closure



VELCRO CLOSURE

**4730**



REALTREE  
HARDWOODS



**4730** REALTREE  
HARDWOODS VISOR

QUANTITY	72pcs	144pcs	288pcs (3A)
Blank (pcs)	\$5.98	\$5.78	\$5.38
Emb 5k sts	\$9.96	\$9.36	\$8.76

- 55% cotton, 45% polyester blended
- 8 row stitches on the bill
- Pre-curved bill with 4 needle sweatband
- Self fabric Velcro closure



VELCRO CLOSURE

# CAMO VISORS

**4740**



KING CAMO

**NEW**  
CAMO / 2016

**4740** KING'S CAMO FASHION VISOR

QUANTITY	72pcs	144pcs	288pcs (3A)
Blank (pcs)	\$5.98	\$5.78	\$5.38
Emb 5k sts	\$9.96	\$9.36	\$8.76

- 55% cotton, 45% polyester blended
- 8 row stitches on the bill
- Pre-curved bill with 4 needle sweatband
- Self fabric Velcro closure



VELCRO CLOSURE

**4750**



NEXT CAMO G2



**4750** NEXT CAMO VISOR

QUANTITY	72pcs	144pcs	288pcs (3A)
Blank (pcs)	\$5.58	\$5.38	\$4.98
Emb 5k sts	\$9.56	\$8.96	\$8.36

- 55% cotton, 45% polyester blended
- 8 row stitches on the bill
- Pre-curved bill with needle sweatband
- Self fabric Velcro closure



VELCRO CLOSURE

**4760**



DIGITAL GREEN



DIGITAL GRAY



VELCRO CLOSURE

- 100% cotton twill
- 8 row stitches on the bill
- Pre-curved bill with 4 needle sweatband
- Self fabric Velcro closure

**4760** CAMO COTTON TWILL VISOR

QUANTITY	72pcs	144pcs	288pcs (3A)
Blank (pcs)	\$4.78	\$4.58	\$4.18
Emb 5k sts	\$8.76	\$8.16	\$7.56





# 5 PANEL - SOLID/TWO TONE

**5100**



POLY SNAP CLOSURE

TEAL

**5100** 5 PANEL COTTON TWILL BASEBALL CAP

QUANTITY	72pcs	144pcs	288pcs (3A)
Blank (pcs)	\$3.58	\$3.38	\$2.98
Emb 5k sts	\$7.56	\$6.96	\$6.36

- 100% cotton twill
- Half moon buckram and pre-curved bill
- Poly snap closure



DK GREEN

SILVER

**5110S**



POLY SNAP CLOSURE

RED

**5110S** 5 PANEL CONSTRUCTED COTTON TWILL BASEBALL CAP

QUANTITY	72pcs	144pcs	288pcs (3A)
Blank (pcs)	\$3.58	\$3.38	\$2.98
Emb 5k sts	\$7.56	\$6.96	\$6.36

- 100% cotton twill
- Fused buckram and pre-curved bill
- Poly snap closure



DK GREEN

WHITE

TURQUOISE

NAVY

BLACK

CARDINAL

GOLD

TEAL

ROYAL

SILVER

**5110B**



POLY SNAP CLOSURE

BLACK/  
SILVER

- 100% cotton twill
- Fused buckram and pre-curved bill
- Poly snap closure



BLACK/GOLD

BLACK/TEAL

BLACK/PURPLE

BLACK/RED

**5110B** 5 PANEL CONSTRUCTED COTTON TWILL BASEBALL CAP

QUANTITY	72pcs	144pcs	288pcs (3A)
Blank (pcs)	\$3.58	\$3.38	\$2.98
Emb 5k sts	\$7.56	\$6.96	\$6.36

# TWO TONE - 5 PANEL

**5110C**



POLY SNAP CLOSURE

DARK GREEN/  
ORANGE

<b>5110C</b> 5 PANEL CONSTRUCTED COTTON TWILL BASEBALL CAP			
QUANTITY	72pcs	144pcs	288pcs
Blank (pcs)	\$3.58	\$3.38	\$2.98 (3A)
Emb 5k sts	\$7.56	\$6.96	\$6.36

- 100% cotton twill
- Fused buckram and pre-curved bill
- Poly snap closure



NAVY/RED



TEAL/PURPLE

**5110W**



POLY SNAP CLOSURE

WHITE/  
NAVY

<b>5110W</b> 5 PANEL CONSTRUCTED COTTON TWILL BASEBALL CAP			
QUANTITY	72pcs	144pcs	288pcs (3A)
Blank (pcs)	\$3.58	\$3.38	\$2.98
Emb 5k sts	\$7.56	\$6.96	\$6.36

- 100% cotton twill
- Fused buckram and pre-curved bill
- Contrasting color poly snap closure



WHITE/NAVY



WHITE/ROYAL



WHITE/TEAL

**5120**



POLY SNAP CLOSURE

NATURAL/  
CARDINAL

<b>5120</b> 5 PANEL CONSTRUCTED COTTON TWILL BASEBALL CAP			
QUANTITY	72pcs	144pcs	288pcs (3A)
Blank (pcs)	\$3.58	\$3.38	\$2.98
Emb 5k sts	\$7.56	\$6.96	\$6.36

- 100% cotton twill
- Fused buckram and pre-curved bill
- Contrasting color poly snap closure



NATURAL/NAVY



NATURAL/PURPLE



NATURAL/DK GREEN



NATURAL/BLACK



NATURAL/RED



NATURAL/KELLY

# TRUCKER CAPS

## 5400C



POLY SNAP CLOSURE

ORANGE/  
WHITE

### 5400C 5 PANEL POLY FOAM MESH TRUCKER FLAT BILL CAP

QUANTITY	72pcs	144pcs	288pcs (3A)
Blank (pcs)	\$3.38	\$3.18	\$2.78
Emb 5k sts	\$7.36	\$6.76	\$6.16

- 100% polyester with nylon mesh back
- Foam front panel with flat bill
- Poly snap closure



BLACK/WHITE



NAVY/WHITE



DARK GREEN/WHITE



RED/WHITE



ROYAL/WHITE



KELLY/WHITE

## 5400S



POLY SNAP CLOSURE

KELLY

### 5400S 5 PANEL POLY FOAM MESH TRUCKER CAP

QUANTITY	72pcs	144pcs	288pcs (3A)
Blank (pcs)	\$3.38	\$3.18	\$2.78
Emb 5k sts	\$7.36	\$6.76	\$6.16

YOUTH SIZES AVAILABLE IN THE FOLLOWING COLORS ONLY  
CARDINAL / GOLD / ORANGE / WHITE



BLACK



NAVY



ROYAL



COL. BLUE



CARDINAL



RED



ORANGE



GOLD



BROWN



DARK GREEN



SILVER



WHITE

- 100% polyester with mesh back
- Foam front panel with flat bill
- Poly snap closure

## 5400W



POLY SNAP CLOSURE

WHITE/  
ROYAL

### 5400W 5 PANEL POLY FOAM MESH TRUCKER CAP

QUANTITY	72pcs	144pcs	288pcs (3A)
Blank (pcs)	\$3.38	\$3.18	\$2.78
Emb 5k sts	\$7.36	\$6.76	\$6.16



WHITE/BLACK



WHITE/BROWN



WHITE/DARK GREEN



WHITE/GOLD



WHITE/NAVY



WHITE/PURPLE



WHITE/SILVER



WHITE/KELLY



WHITE/RED



WHITE/ORANGE



WHITE/CARDINAL



WHITE/ROYAL

- 100% polyester with nylon mesh back
- White foam front panel with flat bill
- Poly snap closure



# TRUCKER CAPS

**5410**



BLACK



- 100% cotton twill with nylon mesh back
- Buckram and pre-curved bill
- Poly snap closure



POLY SNAP CLOSURE

**5410**

5 PANEL TWILL MESH TRUCKER CAP

QUANTITY	72pcs	144pcs	288pcs (3A)
Blank (pcs)	\$3.58	\$3.38	\$2.98
Emb 5k sts	\$7.56	\$6.96	\$6.36



BLACK



RED



GOLD



TAN



WHITE



CARDINAL



NAVY



ROYAL



DARK GREEN



SILVER

**6420**



RED



- 100% cotton twill with nylon mesh back
- Buckram and pre-curved bill
- Deluxe 4 needle sweatband
- Self fabric Velcro closure



VELCRO CLOSURE

**6420**

6 PANEL LIGHT BRUSHED TRUCKER CAP

QUANTITY	72pcs	144pcs	288pcs (3A)
Blank (pcs)	\$3.58	\$3.38	\$2.98
Emb 5k sts	\$7.56	\$6.96	\$6.36



STONE



ROYAL



NAVY



BLACK



BROWN/KHAKI



DARK GREEN/WHITE



BLACK/WHITE



PINK/WHITE



NAVY/WHITE



BLACK/KHAKI



NAVY/KHAKI



ROYAL/WHITE



RED/WHITE



GRAY/WHITE

**8410**



NAVY/STONE



- Unconstructed low profile
- 6 Panel, pre-curved bill

- Sewn eyelets
- Plastic snap closure
- Soft mesh back



POLY SNAP CLOSURE

**8410**

BIO-WASHED COTTON TWILL FRONT W/SOFT MESH SIDES & BACK

QUANTITY	72pcs	144pcs	288pcs (3A)
Blank (pcs)	\$5.58	\$5.38	\$4.98
Emb 5k sts	\$9.56	\$8.96	\$8.36



NAVY



BLACK



NAVY/STONE W/CONTRASTING STITCH



BLACK/STONE



BLACK/STONE W/CONTRASTING STITCH

# PATENTED CAPS

**8000**

**8000**

CONSTRUCTED OPTI-GRAB  
SUNGLASSES HOLDER CAP

QUANTITY	72pcs	144pcs	288pcs (3A)
Blank (pcs)	\$6.18	\$5.98	\$5.58
Emb 5k sts	\$10.16	\$9.56	\$8.96



VELCRO CLOSURE

- Multiple positions secure sunglasses holder
- Heavy brushed cotton
- deluxe 4 needle sweatband
- Self fabric Velcro closure

(SUNGLASSES NOT INCLUDED - FOR DEMO ONLY)



KEEP YOUR GLASSES SECURE WITH THIS INNOVATIVE MULTI DIRECTION SUNGLASSES HOLDER.



WHITE

NAVY

STONE

BLACK



WHITE



US Patent # 6,647,554

**8055**

**8055**

CONSTRUCTED BRUSHED  
COTTON FOLD-A-BILL CAP

QUANTITY	72pcs	144pcs	288pcs (3A)
Blank (pcs)	\$4.58	\$4.38	\$3.98
Emb 5k sts	\$8.56	\$7.96	\$7.36

- Foldable bill that rebounds back to regular shape
- Light brushed cotton twill
- Soft buckram with pre-curved bill
- Deluxe 4 needle sweatband
- Self fabric Velcro closure

US PATENT # 7,152,251  
INTERNATIONAL PATENT PENDING  
CANADA PATENT PENDING



KHAKI/  
BLACK



VELCRO CLOSURE



NAVY/WHITE

BLACK/KHAKI

KHAKI/BLACK

BLACK/RED



FOLD-A-BILL-FLEX



FOLDED INTO POCKET

**8058**

**8058**

CONSTRUCTED 3M SCOTCHLITE™  
REFLECTIVE BRUSHED CANVAS CAP

QUANTITY	72pcs	144pcs	288pcs (3A)
Blank (pcs)	\$8.10	\$7.90	\$7.50
Emb 5k sts	\$12.08	\$11.48	\$10.88

- Reflective 3M fabric material & cotton brushed canvas
- Buckram and pre-curved bill
- Reflective 3M fabric on Velcro closure



NAVY



BLACK

NAVY

US Patent # 478,710



VELCRO CLOSURE



LIGHT GREEN REPRESENTS REFLECTIVE MATERIAL



MADE IN THE USA

6200US



6200US		MADE IN USA CAP		
QUANTITY	72pcs	144pcs	288pcs (3A)	
Blank (pcs)	\$10.58	\$10.38	\$9.98	
Emb 5k sts	\$14.56	\$13.96	\$13.36	



NAVY WHITE RED BLACK

- 100% brushed cotton twill
- Constructed 6 panel with buckram
- Pre-curved bill with pro-stitching
- Deluxe four needle self fabric sweatband
- Poly-snap closure

W1700US



W1700US		USA SHORT KNIT BEANIE		
QUANTITY	72pcs	144pcs	288pcs (3A)	
Blank (pcs)	\$4.58	\$4.38	\$3.98	
Emb 5k sts	\$8.56	\$7.96	\$7.36	



BLACK NAVY ROYAL  
GRAY RED WHITE

- 100% acrylic
- Approximately 8-8 1/2" long
- One size fits most
- Made in USA

W1710US



W1710US		USA LONG KNIT TOQUE		
QUANTITY	72pcs	144pcs	288pcs (3A)	
Blank (pcs)	\$4.98	\$4.78	\$4.38	
Emb 5k sts	\$8.96	\$8.36	\$7.76	



RED NAVY ROYAL  
GRAY BLACK WHITE

- 100% acrylic
- Approximately 12" long
- One size fits most
- Made in USA



# FASHION STYLE

**8360**



RING BUCKLE CLOSURE

**8360** UNCONSTRUCTED BIO-WASHED THICK STITCH CAP

QUANTITY	72pcs	144pcs	288pcs (3A)
Blank (pcs)	\$4.98	\$4.78	\$4.38
Emb 5k sts	\$8.96	\$8.36	\$7.76

- Premium quality 100% bio-washed cotton
- Unconstructed accent contrast thick stitch with pre-curved bill
- Fabric closure with antique shoe buckle

BLACK



NAVY



STONE



GRAY

**8363**



VELCRO CLOSURE

**8363** KC CAPS PRO STYLE THICK STITCH CONSTRUCTED LOW PROFILE

QUANTITY	72pcs	144pcs	288pcs (3A)
Blank (pcs)	\$5.38	\$5.18	\$4.78
Emb 5k sts	\$9.36	\$8.76	\$8.16

GRAY/NAVY

- Chino washed cotton twill
- Contrast thick stitch on pre-curved bill
- Deluxe 4 needle sweatband
- Self fabric closure with deluxe ring buckle



BLACK/RED



STONE



BLACK



WHITE/BLACK

# FASHION STYLE

**8361**



**BROWN/  
KHAKI**

**8361**

**SUPER SPORT  
PRO STYLE CAP**

QUANTITY	72pcs	144pcs	288pcs (3A)
Blank (pcs)	\$5.38	\$5.18	\$4.78
Emb 5k sts	\$9.36	\$8.76	\$8.16

- 100% chino cotton twill 6-panel structured cap
- Contrast eyelets
- Contrast pro stitch on crown & bill
- 6 Rows stitching on visor
- Matching fabric undervisor
- Matching Velcro closure



**VELCRO CLOSURE**

**8368**



**RED/  
WHITE**

**8368**

**THE HALF PIPE  
CAP**

QUANTITY	72pcs	144pcs	288pcs (3A)
Blank (pcs)	\$5.38	\$5.18	\$4.78
Emb 5k sts	\$9.36	\$8.76	\$8.16

- 100% chino cotton twill 6-panel structured cap
- Pre-curved bill with half-pipe accent
- Sandwich visor bill
- Velcro closure



**VELCRO CLOSURE**

# 6 PANEL - FASHION STYLE

**8280**



RING BUCKLE CLOSURE

STONE/  
TANGERINE

**8280** CONSTRUCTED HEAVY BRUSHED COTTON CAP W/RIBBON TRIM

QUANTITY	72pcs	144pcs	288pcs (3A)
Blank (pcs)	\$3.58	\$3.38	\$2.98
Emb 5k sts	\$7.56	\$6.96	\$6.36

- 100% heavy brushed cotton twill with buckram
- Pre-curved bill with contrasting ribbon trim
- Self fabric closure w/match ribbon & metal ring buckle



**8311**



RING BUCKLE CLOSURE

STONE/  
BLUE

**8311** UNCONSTRUCTED CHINO WASHED RETRO LOOK TWO TONE CAP

QUANTITY	72pcs	144pcs	288pcs (3A)
Blank (pcs)	\$4.98	\$4.78	\$4.38
Emb 5k sts	\$8.96	\$8.36	\$7.76

- Chino washed cotton twill
- Pre-curved bill
- Painted metal eyelets
- Deluxe 4 needle sweatband
- Self fabric closure with metal ring buckle



**8330**



RING BUCKLE CLOSURE

BLACK

NAVY

KHAKI

WHITE

BROWN



- Chino washed cotton twill
- Pre-curved bill with worn / frayed edge
- Deluxe 4 needle sweatband
- Self fabric closure with metal ring buckle

**8330** UNCONSTRUCTED CHINO DELUXE WASHED CAP WITH ABRASION

QUANTITY	72pcs	144pcs	288pcs (3A)
Blank (pcs)	\$5.38	\$5.18	\$4.78
Emb 5k sts	\$9.36	\$8.76	\$8.16



# 6 PANEL - FLAT BILL CAPS

**8320**



STITCHES ON BACK



VELCRO CLOSURE

**8320**

DELUXE WASHED CHINO COTTON SURPLUS CAP

QUANTITY	72pcs	144pcs	288pcs (3A)
Blank (pcs)	\$5.58	\$5.38	\$4.98
Emb 5k sts	\$9.56	\$8.96	\$8.36

- Chino washed cotton twill
- Abrasion on bill & back
- Deluxe 4 needle sweatband
- Self fabric closure Velcro closure



ABRASION ON BILL



STITCHING & ABRASION

OLIVE



BLACK



KHAKI

**8321**



CAMO GREEN

**8321**

FASHION MILITARY SURPLUS CAP

QUANTITY	72pcs	144pcs	288pcs (3A)
Blank (pcs)	\$4.58	\$4.38	\$3.98
Emb 5k sts	\$8.56	\$7.96	\$7.36



VELCRO CLOSURE

- 100% cotton twill
- Unconstructed
- Pre-curved bill
- Self fabric Velcro closure



CHARCOAL



BROWN



PINK



OLIVE



CAMO GREY



CAMO GREEN



BLACK



STONE

# 6 PANEL - FASHION STYLE

**8340**



RING BUCKLE CLOSURE

MANGO

**8340**

UNCONSTRUCTED SUN BLEACH OVERDYED CAP

QUANTITY	72pcs	144pcs	288pcs (3A)
Blank (pcs)	\$5.38	\$5.18	\$4.78
Emb 5k sts	\$9.36	\$8.76	\$8.16

- 6 panel unconstructed sun-bleached low profile cap
- Garment washed, brushed cotton
- Pre-curved visor with gray underbill, sweatband & taping
- Deluxe 4 needle sweatband
- Fabric closure with antique buckle



BROWN

ALMOND

**8350**



VELCRO CLOSURE

BLACK/GOLD

**8350**

CONSTRUCTED 6 PANEL SPECKLE BILL ACCENT CAP

QUANTITY	72pcs	144pcs	288pcs (3A)
Blank (pcs)	\$5.18	\$4.98	\$4.58
Emb 5k sts	\$9.16	\$8.56	\$7.96

- 6 panel constructed cap
- Screen print speckled bill
- Pre-curve visor
- Velcro closure



BLACK/RED

BLACK/GRAY

BLACK/GREEN

BLACK/NEON ORANGE

**8980**

NEW



VELCRO CLOSURE

BROWN

**8980**

FAUX LEATHER POLY CONSTRUCTED BASEBALL CAP

QUANTITY	72pcs	144pcs	288pcs (3A)
Blank (pcs)	\$6.58	\$6.38	\$5.98
Emb 5k sts	\$10.56	\$9.96	\$9.36

- Faux leathered poly cotton 6 panel cap
- 6 panel pro style constructed cap
- Faux leathered poly cotton
- Pre-curve peak
- Velcro closure

# 6 PANEL - FLAT BILL CAPS

**3009**



BLACK



BACK

US Patent # 6,131,202

- 85% Acrylic 12% wool 3% spandex
- Buckram and flat bill
- Nu-fit logo spandex sweatband
- size: (S/M 6¼ - 7¼) • (L/XL 7½ - 7¾)

**3009**

NU-FIT® FLAT BILL STREET WEAR CAP

QUANTITY	72pcs	144pcs	288pcs (3A)
Blank (pcs)	\$7.18	\$6.98	\$6.58
Emb 5k sts	\$11.16	\$10.56	\$9.96



NAVY



WHITE

**6009**



NAVY



POLY SNAP CLOSURE



GREEN UNDERBILL

**6009**

DELUXE FASHION FLAT BILL SNAPBACK CAP

QUANTITY	72pcs	144pcs	288pcs (3A)
Blank (pcs)	\$4.78	\$4.58	\$4.18
Emb 5k sts	\$8.76	\$8.16	\$7.56



BLACK

- Deluxe cotton twill
- Buckram and flat bill
- Poly snap closure
- Green underbill

**6809**



GREEN/ ORANGE



POLY SNAP CLOSURE

- Acrylic wool material
- Constructed classic look with buckram
- Green under bill
- Poly snap closure

**6809**

DELUXE FASHION FLAT BILL SNAPBACK CAP

QUANTITY	72pcs	144pcs	288pcs (3A)
Blank (pcs)	\$4.58	\$4.38	\$3.98
Emb 5k sts	\$8.56	\$7.96	\$7.36



WHITE/BLACK



WHITE/DARK GREEN

**6819**



WHITE/ BLACK



POLY SNAP CLOSURE

**6819**

CONSTRUCTED POLY SERGE FLAT BILL CAP

QUANTITY	72pcs	144pcs	288pcs (3A)
Blank (pcs)	\$4.58	\$4.38	\$3.98
Emb 5k sts	\$8.56	\$7.96	\$7.36



NAVY

BROWN

KHAKI

WHITE/BLACK



BLACK



DK GRAY



ROYAL



RED



BLACK/RED



BLACK/GOLD



BLACK/LT GRAY



BLACK/ROYAL



BLACK/PURPLE



NAVY/RED

- 100% poly serge twill
- Firm buckram
- Flat bill with pro-stitching
- Poly snap closure



# 6 PANEL SPORT PERFORMANCE

## 8900S



DRAWSTRING CLOSURE

8900S PINK



- Cool-N-dry 100% polyester waffle weave fabric
- Featherweight 7-panel unconstructed
- Self fabric sweatband w/mesh side vents
- Back elastic d
- One size fits most



SILVER

WHITE

BLACK

NAVY

## 8900T



8900T WHITE/BLACK



DRAWSTRING CLOSURE



WHITE/BLACK

BLACK/WHITE

## 8910



VELCRO CLOSURE



STONE

- Cool & Dry 100% polyester diamond weave fabric
- Modified low profile crown
- Pre-curved bill
- Deluxe four needle self fabric sweatband
- Self cloth Velcro closure



BLACK

NAVY

WHITE

RED

## 8910

SUPER LIGHTWEIGHT CONSTRUCTED PERFORMANCE SPORT CAP

QUANTITY	72pcs	144pcs	288pcs (3A)
Blank (pcs)	\$4.98	\$4.78	\$4.38
Emb 5k sts	\$8.96	\$8.36	\$7.76

## 8913



WHITE/BLACK



VELCRO CLOSURE



- Cool & Dry 100% polyester diamond weave
- Low profile 6-panel soft structured
- Pre-curved sandwich bill
- Deluxe 4 needle sweatband
- Elastic band with plastic loop Velcro closure



BLACK/WHITE

BLACK/RED

RED/BLACK

STONE/BLACK

NAVY/STONE

## 8913

SUPER LIGHT WEIGHT CONSTRUCTED PERFORMANCE SANDWICH CAP

QUANTITY	72pcs	144pcs	288pcs (3A)
Blank (pcs)	\$4.98	\$4.78	\$4.38
Emb 5k sts	\$8.96	\$8.36	\$7.76

# 6 PANEL SPORT PERFORMANCE

**8920**



**8920**

SUPER LIGHT WEIGHT CONSTRUCTED PERFORMANCE CAP

QUANTITY	72pcs	144pcs	288pcs (3A)
Blank (pcs)	\$5.58	\$5.38	\$4.98
Emb 5k sts	\$9.56	\$8.96	\$8.36

- Cool and dry 100% polyester waffle weave
- Low profile 6-panel soft structured
- Contrast roll up underbill with matching 4 contrast vents
- Elastic band with plastic loop Velcro closure
- Self-fabric sweatband

ROYAL/WHITE



BLACK/WHITE



LIGHT BLUE/WHITE



PINK/WHITE



WHITE/BLACK



BLACK/RED



NAVY/STONE



RED/BLACK



STONE/BLACK



**8940**



RED

**8940**

CONSTRUCTED DELUXE LIGHT BRUSHED COTTON PIQUE MESH BACK CAP

QUANTITY	72pcs	144pcs	288pcs (3A)
Blank (pcs)	\$4.98	\$4.78	\$4.38
Emb 5k sts	\$8.96	\$8.36	\$7.76



NAVY/WHITE



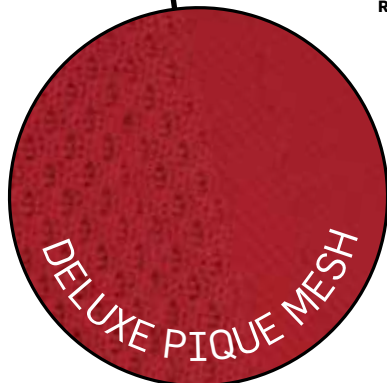
BLACK/WHITE



ROYAL/WHITE



CHARCOAL/WHITE



- Ultra light brushed front panels with soft buckram
- 4 panel deluxe pique mesh back
- Deluxe 4 needle sweatband
- Self-fabric Velcro closure



BLACK



WHITE



NAVY



ROYAL



# 6 PANEL SPORT PERFORMANCE

**8950**



NAVY/  
WHITE

**8950**

RIP STOP CAP WITH STRIPE BILL ACCENT

QUANTITY	72pcs	144pcs	288pcs (3A)
Blank (pcs)	\$5.58	\$5.38	\$4.98
Emb 5k sts	\$9.56	\$8.96	\$8.36

- Hyper-cool Ripstop in 100 % polyester performance fabric
- Unconstructed 6 Panel
- Pre-curve Bill with stripe
- Low Profile
- Self fabric Velcro closure



**KEEP COOL.**  
hyper/cool performance cap



RED/BLACK



WHITE/BLACK



BLACK/RED



BLACK/WHITE

**8951**



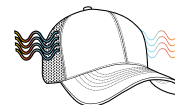
RED

**8951**

CONSTRUCTED RIPSTOP PERFORMANCE CAP

QUANTITY	72pcs	144pcs	288pcs (3A)
Blank (pcs)	\$4.98	\$4.78	\$4.38
Emb 5k sts	\$8.96	\$8.36	\$7.76

- Hyper-cool Ripstop in 100 % polyester performance fabric
- Constructed 6 panel with buckram
- Pre-curved bill
- Deluxe four needle sweatband
- Self fabric Velcro closure



**KEEP COOL.**  
hyper/cool performance cap



NAVY



BLACK



WHITE

**8990**



**KEEP COOL.**  
hyper/cool performance cap

**8990**

CONSTRUCTED ATHLETIC MESH PERFORMANCE SPORT CAP

QUANTITY	72pcs	144pcs	288pcs (3A)
Blank (pcs)	\$4.98	\$4.78	\$4.38
Emb 5k sts	\$8.96	\$8.36	\$7.76

- 100% polyester athletic mesh
- Constructed 6 panel with buckram
- Gray contrast under bill
- Pre-curved bill with pro-stitching
- Deluxe four needle sweatband
- Self cloth Velcro closure



WHITE



RED



BLACK



NAVY



# 6 PANEL WASHED COTTON

**8100**



**GOLD (ADULT)**

<b>8100</b>		UNCONSTRUCTED DELUXE COTTON WASHED BRUSHED GAP CAP		
QUANTITY	72pcs	144pcs	288pcs (3A)	
Blank (pcs)	\$4.98	\$4.78	\$4.38	
Emb 5k sts	\$8.96	\$8.36	\$7.76	



**RING BUCKLE CLOSURE - YOUTH**



**RING BUCKLE CLOSURE - ADULT**

- Washed brushed cotton twill
- Pre-curved bill
- Deluxe 4 needle sweatband
- Self fabric closure with ring buckle



**SILVER (ADULT)**



**PURPLE (ADULT)**



**KELLY (ADULT)**



**MAROON (ADULT)**



**LEMON**



**BLACK**



**BLUEBERRY**



**DARK GREEN**



**STRAWBERRY**



**MANGO**



**NAVY**



**GRAPE**



**LIME**



**PINK**



**TANGERINE**



**ROYAL**



**LIGHT BLUE**



**ALMOND**



**WHITE**



**RED**

# 6 PANEL WASHED COTTON

## 8130S/T



8130T  
KHAKI/  
CHARCOAL



8130S/  
NAVY



LEATHER STRAP  
BRASS BUCKLE CLOSURE

8130S/T	UNCONSTRUCTED GARMENT WASHED EXTENDED BILL CAP		
QUANTITY	72pcs	144pcs	288pcs (3A)
Blank (pcs)	\$5.38	\$5.18	\$4.78
Emb 5k sts	\$9.36	\$8.76	\$8.16

- 100% garment washed cotton twill
- Extended bill
- Contrasting color button
- Deluxe 4 needle sweatband
- Leather strap w/brass buckle & grommet



## 8140S



CHARCOAL



BUCKLE CLOSURE

8140S	UNCONSTRUCTED WASHED COTTON TWILL POLO CAP		
QUANTITY	72pcs	144pcs	288pcs (3A)
Blank (pcs)	\$4.58	\$4.38	\$3.98
Emb 5k sts	\$8.56	\$7.96	\$7.36

- 100% washed cotton twill
- Extended bill
- Deluxe metal eyelets
- Deluxe 4 needle sweatband
- Self fabric closure with shoe buckle & grommet



# 6 PANEL WASHED COTTON

**8140T**



**KHAKI/  
DARK GREEN**



**BUCKLE CLOSURE**

- 100% washed cotton twill
- Extended bill
- Deluxe metal eyelets
- Contrasting color button
- Deluxe 4 needle sweatband
- Self fabric closure w/shoe buckle & grommet

<b>8140T</b>	<b>UNCONSTRUCTED WASHED COTTON TWILL POLO CAP</b>		
QUANTITY	72pcs	144pcs	288pcs (3A)
Blank (pcs)	\$4.58	\$4.38	\$3.98
Emb 5k sts	\$8.56	\$7.96	\$7.36



**8160**



**NAVY/  
STONE**

<b>8160</b>	<b>UNCONSTRUCTED CONTRASTING STITCH SANDWICH CAP</b>		
QUANTITY	72pcs	144pcs	288pcs (3A)
Blank (pcs)	\$4.98	\$4.78	\$4.38
Emb 5k sts	\$8.96	\$8.36	\$7.76

- 100% washed brushed cotton twill
- Contrasting stitching on crown and pre curved sandwich bill
- Deluxe metal eyelets
- Self fabric Velcro closure



**8300**



**TANGERINE/  
NAVY**



**RING BUCKLE CLOSURE**

<b>8300</b>	<b>UNCONSTRUCTED CHINO WASHED COTTON TWILL CAP</b>		
QUANTITY	72pcs	144pcs	288pcs (3A)
Blank (pcs)	\$4.98	\$4.78	\$4.38
Emb 5k sts	\$8.96	\$8.36	\$7.76

- Chino washed cotton twill
- Pre-curved contrasting color underbill
- Deluxe 4 needle sweatband
- Self fabric closure with deluxe ring buckle



**UNDERBILL DETAIL**





# 6 PANEL WASHED COTTON

**8310**



VELCRO CLOSURE

WHITE

**8310** UNCONSTRUCTED DELUXE CHINO COTTON WASHED CAP

QUANTITY	72pcs	144pcs	288pcs (3A)
Blank (pcs)	\$5.18	\$4.98	\$4.58
Emb 5k sts	\$9.16	\$8.56	\$7.96

- Chino cotton washed twill
- Pre-curved extended bill
- Deluxe 4 needle sweatband
- Self fabric Velcro closure



**8313**



VELCRO CLOSURE

NAVY/  
KHAKI

**8313** UNCONSTRUCTED CHINO WASHED COTTON TWILL SANDWICH CAP

QUANTITY	72pcs	144pcs	288pcs (3A)
Blank (pcs)	\$5.18	\$4.98	\$4.58
Emb 5k sts	\$9.16	\$8.56	\$7.96

- Chino washed cotton twill
- Pre-curved sandwich bill
- Deluxe 4 needle sweatband
- Self fabric Velcro closure



**8320**



VELCRO CLOSURE

OLIVE

**8320** DELUXE WASHED CHINO COTTON SURPLUS CAP

QUANTITY	72pcs	144pcs	288pcs (3A)
Blank (pcs)	\$5.58	\$5.38	\$4.98
Emb 5k sts	\$9.56	\$8.96	\$8.36

- Chino deluxe washed cotton twill
- Abrasion with stitching on bill & back
- Deluxe 4 needle sweatband
- Self fabric Velcro closure



STITCHING & ABRASION ON BILL



# 6 PANEL WASHED COTTON

**8330**



BROWN

ABRASION ON BILL



RING BUCKLE CLOSURE

**8330** UNCONSTRUCTED CHINO DELUXE WASHED CAP WITH ABRASION

QUANTITY	72pcs	144pcs	288pcs (3A)
Blank (pcs)	\$5.38	\$5.18	\$4.78
Emb 5k sts	\$9.36	\$8.76	\$8.16

- Chino washed cotton twill
- Pre-curved bill with worn and frayed edge
- Deluxe 4 needle sweatband
- Self fabric closure with deluxe ring buckle



KHAKI



WHITE



BLACK



NAVY

**8380**



BUCKLE CLOSURE



**8380** THE ULTIMATE CLASSIC PREMIUM WASHED CAP

QUANTITY	72pcs	144pcs	288pcs (3A)
Blank (pcs)	\$4.98	\$4.78	\$4.38
Emb 5k sts	\$8.96	\$8.36	\$7.76

- Vintage garment washed 100 % cotton twill fabric
- Relaxed perfect fit every time
- Soft unstructured pre-curved bill
- Self fabric antiqued brass shoe buckle closure
- Unisex regular fit

RED



BLACK



NAVY



STONE



WHITE

**8410**



NAVY/  
STONE



SNAP BACK CLOSURE



**8410** BIO-WASHED COTTON TWILL FRONT W/SOFT MESH SIDES & BACK

QUANTITY	72pcs	144pcs	288pcs (3A)
Blank (pcs)	\$5.58	\$5.38	\$4.98
Emb 5k sts	\$9.56	\$8.96	\$8.36

- Unconstructed low profile
- 6 Panel, pre-curved bill
- Sewn eyelets
- Plastic snap closure
- Soft mesh back



BLACK/STONE  
W/CONTRASTING STITCH



BLACK



NAVY



BLACK/STONE

# 6 PANEL - PIGMENT DYE/WASHED COTTON

**8150**



RING BUCKLE CLOSURE

CARDINAL



**8150**

UNCONSTRUCTED WASHED BRUSHED PIGMENT DYED GAP CAP

QUANTITY	72pcs	144pcs	288pcs (3A)
Blank (pcs)	\$5.38	\$5.18	\$4.78
Emb 5k sts	\$9.36	\$8.76	\$8.16

- 100% washed brushed pigment dyed cotton twill
- Pre-curved bill
- Deluxe 4 needle sweatband
- Self fabric closure with deluxe ring buckle



KHAKI

NAVY

DK GREEN

BLACK

**8020**



BLACK/  
ARMY KHAKI



**8020**

6 PANEL UNCONSTRUCTED PIGMENT DYED CAP

QUANTITY	72pcs	144pcs	288pcs (3A)
Blank (pcs)	\$2.38	\$2.18	\$1.78
Emb 5k sts	\$6.36	\$5.76	\$5.16



KHAKI/BLACK

CARDINAL/DK GREEN



BLACK/ARMY KHAKI

BLACK/DK GREEN

- Unconstructed cotton twill
- Pigment dyed and washed
- Two-tone cap w/low profile

**8070S/T**

8070S  
NAVY



8070T  
DARK GREEN/  
KHAKI



SHOE BUCKLE CLOSURE

**8070S/T**

CONSTRUCTED DISTRESSED WASHED COTTON TWILL CAP

QUANTITY	72pcs	144pcs	288pcs (3A)
Blank (pcs)	\$3.92	\$3.72	\$3.32
Emb 5k sts	\$7.90	\$7.30	\$6.70

- Constructed distressed washed cotton twill with soft buckram
- Self fabric closure with snap shoe buckle
- Contrasting top button (8070T)



CHARCOAL

DARK GREEN

MOSS



MOSS/KHAKI

NAVY/KHAKI

CARDINAL



**8080** UNCONSTRUCTED WASHED DENIM CAP

QUANTITY	72pcs	144pcs	288pcs (3A)
Blank (pcs)	\$5.58	\$5.38	\$4.98
Emb 5k sts	\$9.56	\$8.96	\$8.36



DENIM



**8080**

- Washed denim
- Self fabric closure with shoe buckle

**DENIM/ECO GREEN - 6 PANEL**

**8082** UNCONSTRUCTED WASHED DENIM CAP

QUANTITY	72pcs	144pcs	288pcs (3A)
Blank (pcs)	\$5.58	\$5.38	\$4.98
Emb 5k sts	\$9.56	\$8.96	\$8.36



CHARCOAL

**8082**

- Washed denim crown with color bill
- Extended bill
- Leather strap with brass buckle and grommet

**8810**



VELCRO CLOSURE



KHAKI

**8810** CONSTRUCTED PET CAP

QUANTITY	72pcs	144pcs	288pcs (3A)
Blank (pcs)	\$3.38	\$3.18	\$2.78
Emb 5k sts	\$7.36	\$6.76	\$6.16

- 100% PET (polyethylene Terephthalate) Spun fabric
- 8 rows of top stitching on bill
- Soft buckram
- Deluxe 4 needle sweatband
- Velcro closure
- Identified woven label attached left of closure



NAVY

BLACK

**8830**



RING BUCKLE CLOSURE



OLIVE

**8830** UNCONSTRUCTED ORGANIC COTTON TWILL CAP

QUANTITY	72pcs	144pcs	288pcs (3A)
Blank (pcs)	\$6.18	\$5.98	\$5.58
Emb 5k sts	\$10.16	\$9.56	\$8.96

- 100% USDA certified organic cotton twill
- Pre-curved bill
- Deluxe 4 needle sweatband
- Self fabric closure with deluxe ring buckle
- Organic identified woven label attached left of closure



BLACK

NAVY

KHAKI

STONE

# 6 PANEL - CANVAS

## 8050S/T



8050S  
DK GREEN



BUCKLE CLOSURE



8050T  
KHAKI/BLACK



8050S/T	CONSTRUCTED DISTRESSED HEAVY WEIGHT WASHED BRUSHED CANVAS CAP		
QUANTITY	72pcs	144pcs	288pcs (3A)
Blank (pcs)	\$5.58	\$5.38	\$4.98
Emb 5k sts	\$9.56	\$8.96	\$8.36

- Distressed washed brushed canvas
- Soft buckram
- Contrast color button
- Self fabric closure with snap shoe buckle



BLACK

NAVY

KHAKI

NAVY/KHAKI

CHARCOAL/KHAKI

CHARCOAL

KHAKI/NAVY

KHAKI/DK GREEN

DK GREEN/KHAKI

CARDINAL

KHAKI/MOSS

DK GREEN/MOSS

## 8053



BLACK/  
STONE



VELCRO CLOSURE

8053	CONSTRUCTED BRUSHED PIPED SANDWICH CAP		
QUANTITY	72pcs	144pcs	288pcs (3A)
Blank (pcs)	\$5.58	\$5.38	\$4.98
Emb 5k sts	\$9.56	\$8.96	\$8.36

- Heavy brushed cotton canvas with buckram
- Buckram and pre-curved bill with piping
- Self fabric Velcro closure



NAVY/STONE

KHAKI/BLACK

WHITE/NAVY

# LEATHER CLOSURE - 6 PANEL

**6101**



LEATHER STRAP WITH BUCKLE

RED

- 100% cotton twill
- Buckram and pre-curved bill
- Leather strap with brass buckle and grommet

**6101**

CONSTRUCTED COTTON TWILL CAP WITH LEATHER STRAP

QUANTITY	72pcs	144pcs	288pcs (3A)
Blank (pcs)	\$3.98	\$3.78	\$3.38
Emb 5k sts	\$7.96	\$7.36	\$6.76



NAVY

DARK GREEN

KHAKI

WHITE

BLACK

**6300BC/N**



6300BC  
BLACK/BROWN

**6300BC/N**

CONSTRUCTED COTTON TWILL SUEDE BILL CAP

QUANTITY	72pcs	144pcs	288pcs (3A)
Blank (pcs)	\$5.58	\$5.38	\$4.98
Emb 5k sts	\$9.56	\$8.96	\$8.36

- 100% cotton twill
- Buckram and suede bill
- Leather strap closure with brass buckle & grommet
- Contrasting button, eyelets and leather strap (6300N)



6300N LEATHER STRAP WITH BUCKLE

WHITE/BLACK

BLACK/SILVER

RED/BLACK

BLACK/RED

6300N  
NATURAL/BLACK





# 6 PANEL - LEATHER CLOSURE

**8082**



CHARCOAL



LEATHER STRAP BUCKLE CLOSURE

**8082**

UNCONSTRUCTED WASHED DENIM CAP

QUANTITY	72pcs	144pcs	288pcs (3A)
Blank (pcs)	\$5.58	\$5.38	\$4.98
Emb 5k sts	\$9.56	\$8.96	\$8.36

- Washed denim crown with color bill
- Extended bill
- Leather strap with brass buckle and grommet



DARK GREEN

KHAKI

**8220**



DARK GREEN



LEATHER STRAP BUCKLE CLOSURE

**8220**

CONSTRUCTED TEXTURED COTTON CAP

QUANTITY	72pcs	144pcs	288pcs (3A)
Blank (pcs)	\$3.58	\$3.38	\$2.98
Emb 5k sts	\$7.56	\$6.96	\$6.36

- Ramie cotton fabric
- Leather strap with brass buckle and grommet



BLACK

NAVY

ROYAL

HAZELNUT

**8230/8240**



8230/  
PLUM



BRASS BUCKLE CLOSURE

**8230/8240**

CONSTRUCTED BRUSHED HERRINGBONE COTTON CAP

QUANTITY	72pcs	144pcs	288pcs (3A)
Blank (pcs)	\$2.58	\$2.38	\$1.98
Emb 5k sts	\$6.56	\$5.96	\$5.36

- Brushed herringbone cotton twill
- Buckram and pre-curved bill
- Leather strap with brass buckle and grommet



8230 / NAVY

8230 / DK GREEN

8240 NATURAL/CARDINAL

8240 / NATURAL/DK GREEN

8240 KHAKI/CARDINAL

# LEATHER CLOSURE - 6 PANEL

**8130S/T**



8130S  
NAVY

**8130S/T** UNCONSTRUCTED GARMENT  
WASHED EXTENDED BILL CAP

QUANTITY	72pcs	144pcs	288pcs (3A)
Blank (pcs)	\$5.38	\$5.18	\$4.78
Emb 5k sts	\$9.36	\$8.76	\$8.16

- 100% garment washed cotton twill
- Extended bill
- Deluxe 4 needle sweatband
- Leather strap w/brass buckle & grommet



8130T  
KHAKEI/CHARCOAL



BUCKLE CLOSURE



KHAKEI



CARDINAL



DK GREEN



STONE



CHARCOAL



KHAKEI/NAVY



KHAKEI/CARDINAL



KHAKEI/DARK GREEN



STONE/NAVY



STONE/CHARCOAL



STONE/DARK GREEN

**5600L**



ROYAL



LEATHER BACK



5600

**5600L** 5 PANEL CVC  
POPLIN GOLF CAP

QUANTITY	72pcs	144pcs	288pcs (3A)
Blank (pcs)	\$2.38	\$2.18	\$1.78
Emb 5k sts	\$6.36	\$5.76	\$5.16

- Half moon Buckram and pre-curved bill
- Terry cloth sweatband
- CVC poplin



BROWN



PURPLE



DARK GREEN (L)



RED (L)



SILVER



TEAL



ROYAL (L)



WHITE (L)



CARDINAL

# 6 PANEL - COTTON TWILL

## 6000S/T



6000S/  
ROYAL



VELCRO CLOSURE

6000S/T	CONSTRUCTED COTTON TWILL CAP		
QUANTITY	72pcs	144pcs	288pcs (3A)
Blank (pcs)	\$3.58	\$3.38	\$2.98
Emb 5k sts	\$7.56	\$6.96	\$6.36

- 100% cotton twill
- Buckram and pre-curved bill
- Contrasting color buttons & eyelets (6000T)
- Self fabric Velcro closure



WHITE/BLACK

WHITE/NAVY

WHITE/ROYAL

WHITE/RED

NAVY/SILVER

RED

BLACK/RED

CARDINAL

WHITE

KHAKI

DARK GREEN

BLACK

NAVY

BROWN

RED/BLACK

SILVER

## 6100B/C



BLACK/  
YELLOW



BLACK/ORANGE

BLACK/DARK GREEN

BLACK/TEAL

TEAL/PURPLE



POLY SNAP CLOSURE

- 100% cotton twill
- Buckram and pre-curved bill
- Contrasting color buttons & eyelets
- Poly snap closure

6100B/C	CONSTRUCTED COTTON TWILL CAP		
QUANTITY	72pcs	144pcs	288pcs (3A)
Blank (pcs)	\$3.38	\$3.18	\$2.78
Emb 5k sts	\$7.36	\$6.76	\$6.16



# 6 PANEL - COTTON TWILL

**6100S/W**



POLY SNAP CLOSURE

6100S  
CARDINAL

<b>6100S/W</b>		CONSTRUCTED COTTON TWILL CAP		
QUANTITY	72pcs	144pcs	288pcs (3A)	
Blank (pcs)	\$3.38	\$3.18	\$2.78	
Emb 5k sts	\$7.36	\$6.76	\$6.16	

- 100% cotton twill
- Buckram and pre-curved bill
- Contrasting color buttons & eyelets (6100W)
- Poly snap closure



6100W  
WHITE/PURPLE



BLACK



NAVY



WHITE/BLACK



WHITE/PURPLE



WHITE/CARDINAL



WHITE/TEAL

**6120**



NATURAL/  
CARDINAL



POLY SNAP CLOSURE

<b>6120</b>		CONSTRUCTED COTTON TWILL CAP		
QUANTITY	72pcs	144pcs	288pcs (3A)	
Blank (pcs)	\$3.58	\$3.38	\$2.98	
Emb 5k sts	\$7.56	\$6.96	\$6.36	

- 100% cotton twill
- Buckram and pre-curved bill
- Poly snap closure



NATURAL/TEAL



NATURAL/KELLY



NATURAL/DARK GREEN



NATURAL/ROYAL



NATURAL/NAVY



NATURAL/PURPLE



NATURAL/NATURAL



NATURAL/RED



NATURAL/BLACK

# 6 PANEL - COTTON TWILL/LIGHT BRUSHED COTTON

## 6101



LEATHER STRAP WITH BUCKLE

RED

### 6101 CONSTRUCTED COTTON TWILL CAP WITH LEATHER STRAP

QUANTITY	72pcs	144pcs	288pcs (3A)
Blank (pcs)	\$3.98	\$3.78	\$3.38
Emb 5k sts	\$7.96	\$7.36	\$6.76

- 100% cotton twill
- Buckram and pre-curved bill
- Leather strap with brass buckle and grommet



KHAKI

WHITE

BLACK

NAVY

DARK GREEN

## 6110S/V



BLACK (S/V)



- 100% cotton twill
- Buckram and pre-curved bill

6110S - POLY SNAP CLOSURE

6110V - VELCRO CLOSURE

### 6110S/V UNCONSTRUCTED COTTON TWILL CAP

QUANTITY	72pcs	144pcs	288pcs (3A)
Blank (pcs)	\$3.58	\$3.38	\$2.98
Emb 5k sts	\$7.56	\$6.96	\$6.36



6110S POLY SNAP CLOSURE



6110V VELCRO CLOSURE



KHAKI (S/V)

WHITE (V)

DARK GREEN (S/V)

RED (V)

NAVY (V)

## 6230



VELCRO CLOSURE



BLACK

NAVY

PINK RIBBON

KHAKI

WHITE

RED

- Light weight brushed cotton twill
- Self fabric Velcro closure
- Deluxe 4 needle sweatband
- Pre-curved bill

PINK RIBBON

### 6230 UNCONSTRUCTED LIGHT WEIGHT BRUSHED COTTON TWILL CAP

QUANTITY	72pcs	144pcs	288pcs (3A)
Blank (pcs)	\$3.58	\$3.38	\$2.98
Emb 5k sts	\$7.56	\$6.96	\$6.36

# LIGHT BRUSHED COTTON - 6 PANEL



VELCRO CLOSURE

<b>6210</b>	CONSTRUCTED LIGHT WEIGHT BRUSHED COTTON TWILL CAP		
QUANTITY	72pcs	144pcs	288pcs (3A)
Blank (pcs)	\$3.58	\$3.38	\$2.98
Emb 5k sts	\$7.56	\$6.96	\$6.36

**6210**



GRAY



- Light weight brushed cotton twill
- Buckram and pre-curved bill
- Deluxe 4 needle sweatband
- Self fabric Velcro closure



BLACK

CARDINAL

WHITE

NAVY

RED

LIGHT BLUE

ROYAL

PINK

KHAKI

DARK GREEN

GRAY

**6213**



VELCRO CLOSURE

<b>6213</b>	CONSTRUCTED LIGHT WEIGHT BRUSHED COTTON TWILL SANDWICH CAP		
QUANTITY	72pcs	144pcs	288pcs (3A)
Blank (pcs)	\$3.78	\$3.58	\$3.18
Emb 5k sts	\$7.76	\$7.16	\$6.56

- Light weight brushed cotton twill
- Buckram and pre-curved sandwich bill
- Deluxe 4 needle sweatband
- Self fabric Velcro closure



BLACK/RED



BLACK/RED

NAVY/RED

RED/BLACK

BLACK/WHITE

NAVY/WHITE

PINK/WHITE

BLACK/STONE

STONE/NAVY

WHITE/BLACK



# 6 PANEL - MID BRUSHED COTTON

## 8210S



SELF FABRIC BUCKLE CLOSURE



ADULT

YOUTH

OLIVE (ADULT)



8210S	CONSTRUCTED MIDDLE WEIGHT BRUSHED COTTON TWILL CAP		
QUANTITY	72pcs	144pcs	288pcs (3A)
Blank (pcs)	\$4.38	\$4.18	\$3.78
Emb 5k sts	\$8.36	\$7.76	\$7.16

- Middle weight brushed cotton twill
- Soft buckram and pre-curved bill
- Deluxe 4 needle sweatband
- Self fabric closure with shoe buckle & grommet



PURPLE (A)



CHARCOAL (A)



DARK GREEN (A-Y)



NATURAL (A)



BLACK (A-Y)



NAVY (A-Y)



CARDINAL (A)



ROYAL (A-Y)



RED (A-Y)



KHAKI (A-Y)



WHITE (A-Y)

## 8210N



8210N	CONSTRUCTED MIDDLE WEIGHT BRUSHED COTTON TWILL CAP		
QUANTITY	72pcs	144pcs	288pcs (3A)
Blank (pcs)	\$4.38	\$4.18	\$3.78
Emb 5k sts	\$8.36	\$7.76	\$7.16

- Middle weight brushed cotton twill
- Soft buckram and pre-curved bill
- Contrasting color button and eyelets
- Deluxe 4 needle sweatband
- Self fabric closure w/shoe buckle & grommet

NATURAL/RED



SELF FABRIC BUCKLE CLOSURE



NATURAL/BLACK



NATURAL/DARK GREEN



NATURAL/NAVY



NATURAL/ROYAL



NATURAL/CARDINAL

# MID BRUSHED COTTON - 6 PANEL

**8210T**



SELF FABRIC BUCKLE CLOSURE



ADULT



YOUTH

<b>8210T</b> CONSTRUCTED MIDDLE WEIGHT BRUSHED COTTON TWILL CAP		72pcs	144pcs	288pcs (3A)
QUANTITY				
Blank (pcs)	\$4.38	\$4.18	\$3.78	
Emb 5k sts	\$8.36	\$7.76	\$7.16	



- Middle weight brushed cotton twill
- Soft buckram and pre-curved bill
- Contrasting button and eyelets
- Deluxe 4 needle sweatband
- Self fabric closure with shoe buckle & grommet

KHAKI/  
DARK GREEN  
(A-Y)



KHAKI/BLACK (A-Y)

KHAKI/NAVY (A-Y)

KHAKI/OLIVE (A)

KHAKI/CARDINAL (A)

KHAKI/RED (Y)

**8213S**



SILVER BUCKLE CLOSURE



SELF FABRIC

<b>8213S</b> CONSTRUCTED MIDDLE WEIGHT BRUSHED COTTON TWILL CAP		72pcs	144pcs	288pcs (3A)
QUANTITY				
Blank (pcs)	\$4.58	\$4.38	\$3.98	
Emb 5k sts	\$8.56	\$7.96	\$7.36	

- Middle weight brushed cotton twill
- Soft Buckram and pre-curved sandwich bill
- Deluxe metal eyelets
- Deluxe 4 needle sweatband
- Self fabric closure with silver buckle & grommet



NAVY/  
STONE



BLACK/RED

BLACK/STONE

DARK GREEN/STONE

STONE/BLACK

WHITE/BLACK

**8213T**



SILVER BUCKLE CLOSURE



SELF FABRIC

<b>8213T</b> CONSTRUCTED MIDDLE WEIGHT BRUSHED COTTON TWILL CAP		72pcs	144pcs	288pcs (3A)
QUANTITY				
Blank (pcs)	\$4.58	\$4.38	\$3.98	
Emb 5k sts	\$8.56	\$7.96	\$7.36	



- Middle weight brushed cotton twill
- Soft buckram and pre-curved bill
- Deluxe 4 needle sweatband
- Self fabric closure with shoe buckle & grommet



STONE/  
BLACK/  
STONE



BLACK/RED/BLACK

BLACK/ROYAL/BLACK

NAVY/STONE/NAVY

GRAY/BLACK/GRAY

STONE/CARDINAL/STONE

STONE/NAVY/STONE

STONE/DARK GREEN/STONE

# 6 PANEL - HEAVY BRUSHED COTTON

## 6010S/V



WHITE (S)



POLY SNAP CLOSURE (S)



VELCRO CLOSURE (V)

### 6010S/T/V CONSTRUCTED HEAVY BRUSHED COTTON CAP

QUANTITY	72pcs	144pcs	288pcs (3A)
Blank (pcs)	\$3.98	\$3.78	\$3.38
Emb 5k sts	\$7.96	\$7.36	\$6.76

- 100% heavy brushed cotton twill
- Buckram and pre-curved bill
- (6010S/6010T) Poly snap closure
- (6010V) Self fabric Velcro closure



## 6010T/V



KHAKI/  
DARK GREEN (V,T)



VELCRO CLOSURE (6010V)



POLYSNAP CLOSURE (6010T)

- 100% heavy brushed cotton twill
- Buckram and pre-curved bill
- Contrasting color buttons & eyelets
- (6010V) Self fabric Velcro closure
- (6010T) Poly snap closure



## 6090



RED



VELCRO CLOSURE

### 6090 UNCONSTRUCTED HEAVY BRUSHED COTTON CAP

QUANTITY	72pcs	144pcs	288pcs (3A)
Blank (pcs)	\$4.18	\$3.98	\$3.58
Emb 5k sts	\$8.16	\$7.56	\$6.96

- 100% heavy brushed cotton twill
- Pre-curved bill
- Self fabric Velcro closure





# HEAVY BRUSHED COTTON - 6 PANEL

## 8010S



SHOE BUCKLE CLOSURE

<b>8010S</b>		UNCONSTRUCTED HEAVY BRUSHED COTTON CAP		
QUANTITY	72pcs	144pcs	288pcs (3A)	
Blank (pcs)	\$4.18	\$3.98	\$3.58	
Emb 5k sts	\$8.16	\$7.56	\$6.96	

- 100% heavy brushed cotton twill
- Pre-curved bill
- Self fabric closure with snap shoe buckle

PURPLE



ROYAL



BLACK



STONE



DK GREEN



NAVY



CARDINAL

## 8010T



SHOE BUCKLE CLOSURE

<b>8010T</b>		UNCONSTRUCTED HEAVY BRUSHED COTTON CAP		
QUANTITY	72pcs	144pcs	288pcs (3A)	
Blank (pcs)	\$4.18	\$3.98	\$3.58	
Emb 5k sts	\$8.16	\$7.56	\$6.96	

- 100% heavy brushed cotton twill
- Pre-curved bill
- Self fabric closure with snap shoe buckle



CARDINAL/  
DARK GREEN



# 6 PANEL - HEAVY BRUSHED COTTON

## 8090S



HAZELNUT



SHOE BUCKLE CLOSURE

8090S	CONSTRUCTED HEAVY BRUSHED COTTON TWILL CAP		
QUANTITY	72pcs	144pcs	288pcs (3A)
Blank (pcs)	\$4.18	\$3.98	\$3.58
Emb 5k sts	\$8.16	\$7.56	\$6.96



WHITE

BLACK



KHAKI

NAVY



DARK GREEN

RED

STONE

ROYAL

- 100% heavy brushed cotton twill
- Buckram and pre-curved bill
- Self fabric closure with snap shoe buckle

## 8090T



SHOE BUCKLE CLOSURE

8090T	CONSTRUCTED HEAVY BRUSHED COTTON TWILL CAP		
QUANTITY	72pcs	144pcs	288pcs (3A)
Blank (pcs)	\$4.18	\$3.98	\$3.58
Emb 5k sts	\$8.16	\$7.56	\$6.96



CARDINAL/DARK GREEN

BLACK/RED

HAZELNUT/BLACK



KHAKI/NAVY

KHAKI/BLACK

STONE/  
DK GREEN



STONE/NAVY

STONE/BLACK



KHAKI/DARK GREEN

WHITE/BLACK

- 100% heavy brushed cotton twill
- Buckram and pre-curved bill
- Contrasting color button and eyelets
- Self fabric closure w/snap shoe buckle

# 6 PANEL - WOOL SERGE

## 6800S/T



6800S/  
KELLY



6800T/  
BLACK/RED

### 6800S/T

CONSTRUCTED WOOL SERGE CAP

QUANTITY	72pcs	144pcs	288pcs (3A)
Blank (pcs)	\$5.58	\$5.38	\$4.98
Emb 5k sts	\$9.56	\$8.96	\$8.36

- Acrylic wool
- Buckram
- Kelly green underbill
- Poly snap closure
- Contrasting eyelets and button (6800T)



POLY SNAP CLOSURE



ROYAL



PURPLE



KELLY



NAVY



RED



SILVER



BLACK



DK GREEN

IVORY/BLACK

IVORY/DK GREEN

RED/BLACK

DK GREEN/ORANGE

BLACK/RED

PURPLE/GOLD

## 6809



GREEN/  
ORANGE



POLY SNAP CLOSURE

### 6809

DELUXE FASHION FLAT BILL SNAPBACK CAP

QUANTITY	72pcs	144pcs	288pcs (3A)
Blank (pcs)	\$4.58	\$4.38	\$3.98
Emb 5k sts	\$8.56	\$7.96	\$7.36

- Acrylic wool material
- Constructed classic look w/buckram
- Green under bill
- Poly snap closure



WHITE/BLACK



WHITE/DARK GREEN

## 6810



RED



VELCRO CLOSURE

### 6810

RETAIL QUALITY CONSTRUCTED POLY SERGE 6 PANEL CAP

QUANTITY	72pcs	144pcs	288pcs (3A)
Blank (pcs)	\$3.38	\$3.18	\$2.78
Emb 5k sts	\$7.36	\$6.76	\$6.16

- 100% poly serge twill
- Firm buckram
- Pre-curved bill with Pro Stitching
- Deluxe 4 needle sweatband
- Self fabric Velcro closure



BROWN



NAVY



BLACK



KHAKI



RED



DARK GREEN

## 6819



POLY SNAP CLOSURE

WHITE/  
BLACK



### 6819

CONSTRUCTED POLY SERGE FLAT BILL CAP

QUANTITY	72pcs	144pcs	288pcs (3A)
Blank (pcs)	\$4.58	\$4.38	\$3.98
Emb 5k sts	\$8.56	\$7.96	\$7.36

- 100% poly serge twill
- Firm buckram
- Flat bill with Pro-stitching
- Poly snap closure



NAVY



BROWN



KHAKI



WHITE/BLACK



BLACK/GOLD



BLACK/LT GRAY



BLACK/ROYAL



BLACK/PURPLE



NAVY/RED



BLACK/RED



DK GRAY



ROYAL



RED



BLACK



# YOUTH COLLECTION

**3020Y**



BACK

TANGERINE



**3020Y** NU-FIT® CONSTRUCTED ULTRA LIGHT BRUSHED COTTON SPANDEX FITTED CAP

QUANTITY	72pcs	144pcs	288pcs (3A)
Blank (pcs)	\$6.58	\$6.38	\$5.98
Emb 5k sts	\$10.56	\$9.96	\$9.36

- Ultra light 98% brushed cotton, 2% spandex
- Buckram and pre-curved bill
- NU-FIT logo spandex sweatband
- Gray underbill
- Size: youth (6½ - 7)



STONE

YELLOW

LIGHT BLUE

**3913Y**



BACK

STONE/  
NAVY



**3913Y** NU-FIT® CONSTRUCTED DELUXE PIQUE MESH SPANDEX FITTED CAP

QUANTITY	72pcs	144pcs	288pcs (3A)
Blank (pcs)	\$6.58	\$6.38	\$5.98
Emb 5k sts	\$10.56	\$9.96	\$9.36

- 100% poly deluxe pique mesh
- NU-FIT logo spandex sweatband
- Buckram and pre-curved sandwich bill
- Size: youth (6½ - 7)



LIGHT BLUE/WHITE

WHITE/NAVY

**9130Y**



DARK GREEN

- 100% washed pigment dyed cotton twill
- Sewn eyelets

**9130Y** PIGMENT DYED COTTON WASHED BUCKET HAT

QUANTITY	72pcs	144pcs	288pcs (3A)
Blank (pcs)	\$5.44	\$5.24	\$4.84
Emb 5k sts	\$9.42	\$8.82	\$8.22



CHARCOAL

WHITE

NAVY

**9180SY/TY**



NAVY

- 100% washed cotton twill
- Metal side eyelets
- Youth size with elastic sweatband

**9180SY/TY** COTTON WASHED BUCKET HAT

QUANTITY	72pcs	144pcs	288pcs (3A)
Blank (pcs)	\$4.58	\$4.38	\$3.98
Emb 5k sts	\$8.56	\$7.96	\$7.36



DK GREEN

DENIM

CHARCOAL

KHAKI

NAVY

CHARCOAL/KHAKI

NAVY/KHAKI

KHAKI/NAVY

KHAKI/CHARCOAL

KHAKI/DK GREEN

# YOUTH COLLECTION

## 8100Y



LEMON



### 8100Y UNCONSTRUCTED DELUXE COTTON WASHED BRUSHED GAP CAP

QUANTITY	72pcs	144pcs	288pcs (3A)
Blank (pcs)	\$4.98	\$4.78	\$4.38
Emb 5k sts	\$8.96	\$8.36	\$7.76



- Washed brushed cotton twill
- Deluxe 4 needle sweatband
- Pre-curved bill
- Plastic ring with Velcro

## 5400SY



GOLD

### 5400SY 5 PANEL POLY FOAM MESH TRUCKER CAP

QUANTITY	72pcs	144pcs	288pcs (3A)
Blank (pcs)	\$3.38	\$3.18	\$2.78
Emb 5k sts	\$7.36	\$6.76	\$6.16



- 100% polyester with mesh back
- Foam front panel with flat bill
- Poly snap closure

## 8210SY



ROYAL



### 8210SY CONSTRUCTED MIDDLE WEIGHT BRUSHED COTTON TWILL CAP

QUANTITY	72pcs	144pcs	288pcs (3A)
Blank (pcs)	\$4.38	\$4.18	\$3.78
Emb 5k sts	\$8.36	\$7.76	\$7.16



- Light-weight brushed cotton twill
- Soft buckram and pre-curved bill
- Deluxe 4 needle sweatband
- Self fabric closure with shoe buckle & grommet



## CAMO / HUNTING - WILDLIFE

## HT01



## HT01 / HT02 / HT03

QUANTITY	72pcs	144pcs	288pcs (3A)
Blank (pcs)	\$11.58	\$11.38	\$10.98
Emb 5k sts	\$15.56	\$14.96	\$14.36

## HT01

BUCK MESH - hardwoods



## HT02



## HT02

MALLARD MESH - duck blind



## HT03



## HT03

ELK MESH - break up





# WILDLIFE - CAMO / HUNTING

**HT11**



**HT11 / HT12 / HT13**

QUANTITY	72pcs	144pcs	288pcs (3A)
Blank (pcs)	\$11.58	\$11.38	\$10.98
Emb 5k sts	\$15.56	\$14.96	\$14.36

**HT11**  
BUCK CAP - hardwoods



**HT12**



**HT12**  
MALLARD CAP - duck blind



**HT13**



**HT13**  
ELK CAP - break up



ALL WILDLIFE SERIES CAPS HAVE SELF FABRIC VELCRO CLOSURES

## CAMO / HUNTING - WILDLIFE

**HT21**

HT21  
NEON BUCK CAP

**HT21 / HT22 / HT23/HT24/H25/HT26**

QUANTITY	72pcs	144pcs	288pcs	(3A)
Blank (pcs)	\$9.18	\$8.98	\$8.58	
Emb 5k sts	\$13.16	\$12.56	\$11.96	

**HT24**

HT24  
NEON ELK CAP

**HT22**

HT22  
NEON QUAIL CAP

**HT25**

HT25  
NEON TURKEY CAP

**HT23**

HT23  
NEON PHEASANT CAP

**HT26**

HT26  
NEON MALLARD CAP



# WILDLIFE - CAMO / HUNTING

**HT31**



**HT31**  
ELK CAP - brown

**HT31 / HT32 / HT33 / HT34**

QUANTITY	72pcs	144pcs	288pcs (3A)
Blank (pcs)	\$9.18	\$8.98	\$8.58
Emb 5k sts	\$13.16	\$12.56	\$11.96



**HT32**



**HT32** QUAIL CAP - olive



**HT33**



**HT33** TURKEY CAP - sage



**HT34**



**HT34** MALLARD CAP - khaki



ALL WILDLIFE SERIES CAPS HAVE SELF FABRIC VELCRO CLOSURES



# KC CAMO / HUNTING - WILDLIFE

## HT41

TROUT MESH



NAVY

## HT41 / HT42

QUANTITY	72pcs	144pcs	288pcs (3A)
Blank (pcs)	\$9.18	\$8.98	\$8.58
Emb 5k sts	\$13.16	\$12.56	\$11.96



- Original KC Caps embroidery/design
- 100% cotton twill with nylon mesh back
- Buckram and pre-curved bill
- Deluxe 4 needle sweatband
- Self fabric Velcro closure

## HT42

BASS MESH



OLIVE



- Original KC Caps embroidery/design
- 100% cotton twill with nylon mesh back
- Buckram and pre-curved bill
- Deluxe 4 needle sweatband
- Self fabric Velcro closure

# KC CAMO - CAMO / HUNTING

**4710**



BREAK UP



VELCRO CLOSURE



- 55% cotton, 45% polyester blended
- Pre-curved bill with 4 needle sweatband
- 8 row stitches on the bill
- Self fabric Velcro closure

**4710**

**BREAK UP CAMO CAP**

QUANTITY	72pcs	144pcs	288pcs (3A)
Blank (pcs)	\$5.98	\$5.78	\$5.38
Emb 5k sts	\$9.96	\$9.36	\$8.76

**4720d**

**NEW**



VELCRO CLOSURE

**4720d**

**DESERT GAME CAMO VISOR**

QUANTITY	72pcs	144pcs	288pcs (3A)
Blank (pcs)	\$5.98	\$5.78	\$5.38
Emb 5k sts	\$9.96	\$9.36	\$8.76

- 55% cotton, 45% polyester blended
- 8 row stitches on the bill
- Pre-curved bill with 4 needle sweatband
- Self fabric Velcro closure

**4730**



VELCRO CLOSURE

REALTREE HARDWOODS



**4730**

**REALTREE HARDWOODS VISOR**

QUANTITY	72pcs	144pcs	288pcs (3A)
Blank (pcs)	\$5.98	\$5.78	\$5.38
Emb 5k sts	\$9.96	\$9.36	\$8.76

- 55% cotton, 45% polyester blended
- 8 row stitches on the bill
- Pre-curved bill with 4 needle sweatband
- Self fabric Velcro closure

**4740**

**NEW**



VELCRO CLOSURE

**4740**

**KING'S CAMO FASHION VISOR**

QUANTITY	72pcs	144pcs	288pcs (3A)
Blank (pcs)	\$5.98	\$5.78	\$5.38
Emb 5k sts	\$9.96	\$9.36	\$8.76

- 55% cotton, 45% polyester blended
- 8 row stitches on the bill
- Pre-curved bill with 4 needle sweatband
- Self fabric Velcro closure

**4760**



DIGITAL GREEN



- 100% cotton twill
- 8 row stitches on the bill
- Pre-curved bill with 4 needle sweatband
- Self fabric Velcro closure



VELCRO CLOSURE

**4760**

**CAMO COTTON TWILL VISOR**

QUANTITY	72pcs	144pcs	288pcs (3A)
Blank (pcs)	\$4.78	\$4.58	\$4.18
Emb 5k sts	\$8.76	\$8.16	\$7.56



DIGITAL GRAY



# NEXT GENERATION CAMO

## ZK641



**NEW**  
CAMO / 2016

**ZK641** BIO-WASHED COTTON TWILL FRONT  
W/SOFT MESH SIDES & BACK

QUANTITY	72pcs	144pcs	288pcs (3A)
Blank (pcs)	\$6.78	\$6.58	\$6.18
Emb 5k sts	\$10.76	\$10.16	\$9.56



POLY SNAP CLOSURE

- Unconstructed low profile
- 6 Panel, pre-curved bill
- Sewn eyelets
- Plastic snap closure
- Soft mesh back



## 4750



VELCRO CLOSURE

NEXT CAMO  
62

**4750** NEXT CAMO  
VISOR

QUANTITY	72pcs	144pcs	288pcs (3A)
Blank (pcs)	\$5.58	\$5.38	\$4.98
Emb 5k sts	\$9.56	\$8.96	\$8.36

- 55% cotton, 45% polyester blended
- 8 row stitches on the bill
- Pre-curved bill
- 4 needle sweatband
- Self fabric Velcro closure



## 7541



POLY SNAP CLOSURE

**7541** NEXT CAMO  
MESH CAP

QUANTITY	72pcs	144pcs	288pcs (3A)
Blank (pcs)	\$5.58	\$5.38	\$4.98
Emb 5k sts	\$9.56	\$8.96	\$8.36

- NEXT G2 Camo with solid mesh back
- Buckram and pre-curved bill
- Deluxe four needle sweatband
- Poly snap closure



## 7580



VELCRO CLOSURE

**7580** NEXT CAMO  
CAP

QUANTITY	72pcs	144pcs	288pcs (3A)
Blank (pcs)	\$5.58	\$5.38	\$4.98
Emb 5k sts	\$9.56	\$8.96	\$8.36

- 55% cotton / 45% polyester
- Soft buckram and pre-curved bill
- Deluxe 4 needle sweatband
- Self fabric Velcro closure





# NEXT GENERATION CAMO

**7550**



VELCRO CLOSURE



- Multiple positions secure sunglasses holder
- 55% cotton / 45% polyester
- Non-slip side grip
- Self fabric Velcro closure



<b>7550</b>	NEXT CAMO OPTI-GRAB SUNGLASSES HOLDER CAP		
QUANTITY	72pcs	144pcs	288pcs (3A)
Blank (pcs)	\$7.58	\$7.38	\$6.98
Emb 5k sts	\$11.56	\$10.96	\$10.36



KEEP YOUR GLASSES SECURE WITH THIS INNOVATIVE MULTI DIRECTION SUNGLASSES HOLDER.

**7551**



VELCRO CLOSURE



<b>7551</b>	NEXT CAMO MESH SUNGLASSES HOLDER CAP		
QUANTITY	72pcs	144pcs	288pcs (3A)
Blank (pcs)	\$6.98	\$6.78	\$6.38
Emb 5k sts	\$10.96	\$10.36	\$9.76



KEEP YOUR GLASSES SECURE WITH THIS INNOVATIVE MULTI DIRECTION SUNGLASSES HOLDER.

- Multiple positions sunglasses holder
- NEXT Camo front panel and bill
- Buckram and pre-curved bill
- Mesh back w/self fabric Velcro closure

US PATENT # 6,647,554  
INTERNATIONAL PATENT PENDING  
CANADA PATENT PENDING

**W1745**



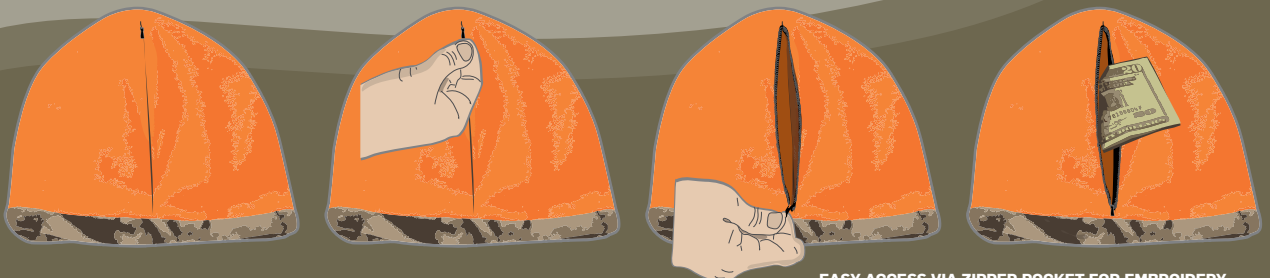
VISTA

**NEW**  
CAMO / 2016

<b>W1745</b>	NEXT CAMO REVERSIBLE CAMO FLEECE BEANIE		
QUANTITY	72pcs	144pcs	288pcs (3A)
Blank (pcs)	\$8.50	\$8.30	\$7.90
Emb 5k sts	\$12.48	\$11.88	\$11.28

- 100% Polyester Fleece
- Approximately 8 - 8½" long
- Front panel all-purpose pocket with zipper
- Double-faced to enable embroidery on either side with no stitches showing through the reverse
- One size fits most

next <sup>GI</sup>  
**VISTA**



EASY ACCESS VIA ZIPPER POCKET FOR EMBROIDERY

# KC FASHION CAMO

**7040**



**BLUE CAMO/BLACK**

**7040** FASHION CAMO MESH CAP

QUANTITY	72pcs	144pcs	288pcs (3A)
Blank (pcs)	\$4.58	\$4.38	\$3.98
Emb 5k sts	\$8.56	\$7.96	\$7.36



**PINK CAMO/WHITE**

**SAND CAMO/WHITE**

**BLACK CAMO/WHITE**



**POLY SNAP CLOSURE**



**GREEN CAMO/BLACK**



**BLUE CAMO/BLACK**

- Fashion camo with solid mesh back
- Buckram and pre-curved bill
- Deluxe four needle sweatband
- Poly snap back

**7041**



**DIGITAL GREEN**



**POLY SNAP CLOSURE**

**7041** DIGITAL CAMOUFLAGE MESH BACK CAP

QUANTITY	72pcs	144pcs	288pcs (3A)
Blank (pcs)	\$4.58	\$4.38	\$3.98
Emb 5k sts	\$8.56	\$7.96	\$7.36

- Digital camo twill with solid soft mesh back
- Buckram and pre-curved bill
- Deluxe self fabric four needle sweatband
- Poly snap closure



**DIGITAL GRAY**

**7160**



**DIGITAL GRAY**



**VELCRO CLOSURE**

**7160** CAMO COTTON TWILL CAP

QUANTITY	72pcs	144pcs	288pcs (3A)
Blank (pcs)	\$4.78	\$4.58	\$4.18
Emb 5k sts	\$8.76	\$8.16	\$7.56

- 100% cotton twill
- Buckram and pre-curved bill
- Self fabric Velcro closure



**DIGITAL GREEN**



**CAMO GREEN**



**CAMO TAN**



# KC FASHION CAMO

**8321**



VELCRO CLOSURE

CAMO/  
GREEN

**8321** FASHION CAMO SURPLUS CAP

QUANTITY	72pcs	144pcs	288pcs (3A)
Blank (pcs)	\$4.58	\$4.38	\$3.98
Emb 5k sts	\$8.56	\$7.96	\$7.36

- 100% cotton twill
- Unconstructed
- Pre-curved visor
- Velcro closure



CAMO GRAY



CAMO GREEN

**8120**



VELCRO CLOSURE

NEON  
ORANGE

**8120** NEON HUNTING ORANGE SAFETY CAP

QUANTITY	72pcs	144pcs	288pcs (3A)
Blank (pcs)	\$5.18	\$4.98	\$4.58
Emb 5k sts	\$9.16	\$8.56	\$7.96

- 100% neon orange polyester
- 6 row stitches on pre-curved bill
- Black under bill for visual comfort
- Soft buckram with self fabric Velcro closure

**7120**



RING BUCKLE



NEON/  
ORANGE  
CAMO

BLACK/CAMO

KHAKI/CAMO

- Heavy brushed cotton canvas crown
- Buckram and pre-curved sandwich bill
- Deluxe 4 needle sweatband
- Self fabric closure with ring buckle

**7120** CONSTRUCTED CANVAS SANDWICH CAP

QUANTITY	72pcs	144pcs	288pcs (3A)
Blank (pcs)	\$6.58	\$6.38	\$5.98
Emb 5k sts	\$10.56	\$9.96	\$9.36

**7121**



VELCRO CLOSURE



NEON

BLACK

OLIVE

- Brushed cotton twill
- 4 rows top stitches on bill
- Deluxe 4 needles sweatband
- Camo Velcro closure and bill

**7121** BRUSHED COTTON CAP

QUANTITY	72pcs	144pcs	288pcs (3A)
Blank (pcs)	\$6.58	\$6.38	\$5.98
Emb 5k sts	\$10.56	\$9.96	\$9.36



## CAMO / HUNTING

7131



BREAK UP

7131

FITTED MESH  
CAP

QUANTITY	72pcs	144pcs	288pcs (3A)
Blank (pcs)	\$7.10	\$6.90	\$6.50
Emb 5k sts	\$11.08	\$10.48	\$9.88

- Camo twill with soft mesh fitted back
- Buckram and pre-curved bill
- NU-FIT logo spandex sweatband
- Performance solid color soft mesh back
- One size fits most



BACK

7140

SHADOW  
GRASSPOLY SNAP  
ENCLOSURE

7140

MILITARY MESH  
CAP

QUANTITY	72pcs	144pcs	288pcs (3A)
Blank (pcs)	\$5.58	\$5.38	\$4.98
Emb 5k sts	\$9.56	\$8.96	\$8.36

- Black mesh back
- Camo brushed cotton front
- Poly snap enclosure



BREAK UP

7141



INFINITY



POLY SNAP CLOSURE

7141

MESH BACK  
CAP

QUANTITY	72pcs	144pcs	288pcs (3A)
Blank (pcs)	\$6.18	\$5.98	\$5.58
Emb 5k sts	\$10.16	\$9.56	\$8.96

- Camo pattern with solid mesh back
- Buckram and pre-curved bill
- Deluxe four needle sweatband
- Poly snap closure



BREAK UP

# PATENT CAMO / HUNTING

**7150**



BREAK UP



VELCRO CLOSURE



SHADOW GRASS



KEEP YOUR GLASSES SECURE WITH THIS INNOVATIVE MULTI DIRECTION SUNGLASSES HOLDER

7150	OPTI-GRAB SUNGLASSES HOLDER CAP		
	QUANTITY	72pcs	144pcs
Blank (pcs)	\$8.58	\$8.38	\$7.98
Emb 5k sts	\$12.56	\$11.96	\$11.36

- Multiple positions secure sunglasses holder
- 60% cotton / 40% polyester
- Non-slip side grip
- Self fabric Velcro closure

(SUNGLASSES NOT INCLUDED - FOR DEMO ONLY) ❖ US Patent # 6,647,554



**7151**



BREAK UP



VELCRO CLOSURE



KEEP YOUR GLASSES SECURE WITH THIS INNOVATIVE MULTI DIRECTION SUNGLASSES HOLDER

7151	OPTI-GRAB MESH SUNGLASSES HOLDER CAP		
	QUANTITY	72pcs	144pcs
Blank (pcs)	\$7.18	\$6.98	\$6.58
Emb 5k sts	\$11.16	\$10.56	\$9.96

- Multiple positions sunglasses holder
- Break Up camo front panel and bill
- Buckram and pre-curved bill
- Mesh back w/self fabric Velcro closure

(SUNGLASSES NOT INCLUDED - FOR DEMO ONLY) ❖ US Patent # 6,647,554



**7155**



BLACK



VELCRO CLOSURE



FOLD A BILL

- Memory board folding bill
- 60% cotton / 40% polyester
- Break Up camo pattern crown
- Soft buckram
- Deluxe 4 needle sweatband
- Self fabric Velcro closure

7155	FOLD A BILL CAP		
	QUANTITY	72pcs	144pcs
Blank (pcs)	\$6.58	\$6.38	\$5.98
Emb 5k sts	\$10.56	\$9.96	\$9.36





# CAMO / HUNTING

**7170**



**OLIVE  
BREAK UP**

<b>7170</b>	<b>UNCONSTRUCTED HEAVY WEIGHT CHINO COTTON "VINTAGE LOOK" CAP</b>		
QUANTITY	72pcs	144pcs	288pcs (3A)
Blank (pcs)	\$8.58	\$8.38	\$7.98
Emb 5k sts	\$12.56	\$11.96	\$11.36

- Washed heavy weight chino cotton with Break-Up camo "Vintage Look" fraying and abrasion
- Double layer front panel
- Pre-curved bill
- Deluxe 4 needle sweatband
- Self fabric closure with ring buckle.



**RING BUCKLE CLOSURE**



**CHOCOLATE/BROWN BREAK UP**



**BLACK/BREAK UP**



**7180**



**TREESTAND**



**VELCRO CLOSURE**

<b>7180</b>	<b>CONSTRUCTED CAMOUFLAGE CAP</b>		
QUANTITY	72pcs	144pcs	288pcs (3A)
Blank (pcs)	\$6.58	\$6.38	\$5.98
Emb 5k sts	\$10.56	\$9.96	\$9.36

- 60% cotton / 40% polyester
- Soft buckram and pre-curved bill
- Deluxe 4 needle sweatband
- Self fabric Velcro closure



**DUCK BLIND**



**BLADES**



**BREAK UP**



**INFINITY**



**TREESTAND**



**BRUSH**



# CAMO / HUNTING

**7181**



VELCRO CLOSURE



NEON ORANGE  
BREAK UP



- Neon orange brushed canvas camo
- Soft buckram and pre-curved bill
- Deluxe 4 needle sweatband
- Self fabric Velcro closure

<b>7181</b>	FLUORESCENT BLAZE ORANGE CAMO CAP		
QUANTITY	72pcs	144pcs	288pcs (3A)
Blank (pcs)	\$7.18	\$6.98	\$6.58
Emb 5k sts	\$11.16	\$10.56	\$9.96

**7182**



VELCRO CLOSURE



BREAK UP

- 60% cotton / 40% polyester pre-curved bill
- Deluxe 4 needle sweatband
- Self fabric Velcro closure

<b>7182</b>	UNCONSTRUCTED CAMO CAP		
QUANTITY	72pcs	144pcs	288pcs (3A)
Blank (pcs)	\$6.58	\$6.38	\$5.98
Emb 5k sts	\$10.56	\$9.96	\$9.36

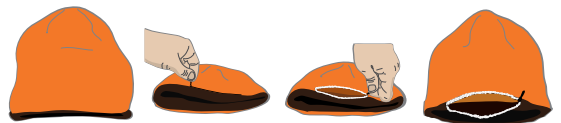
**W1741**



**W1741** REVERSIBLE CAMO  
FLEECE BEANIE

QUANTITY	72pcs	144pcs	288pcs (3A)
Blank (pcs)	\$8.50	\$8.30	\$7.90
Emb 5k sts	\$12.48	\$11.88	\$11.28

- 100% polyester fleece
- Approximately 8 - 8½" long
- Front panel all-purpose pocket with zipper
- Double-faced to enable embroidery on either side with no stitches showing through the reverse
- One size fits most



EASY ACCESS VIA ZIPPER POCKET FOR EMBROIDERY

**K1010**



WINTER  
BREAK UP

SIZE: 50" x 60"

**K1010** FLEECE  
BLANKET

QUANTITY	72pcs	144pcs	288pcs (3A)
Blank (pcs)	\$43.98	\$41.98	\$39.98
Emb 5k sts	\$49.96	\$46.76	\$43.96

- 100% polyester heavy weight fleece with convenient travel strap.

# CAMO / HUNTING - REALTREE CAMO

**4730**



REALTREE  
HARDWOODS



**4730**

REALTREE  
HARDWOODS VISOR

QUANTITY	72pcs	144pcs	288pcs (3A)
Blank (pcs)	\$5.98	\$5.78	\$5.38
Emb 5k sts	\$9.96	\$9.36	\$8.76



VELCRO CLOSURE

- 55% cotton, 45% polyester blended
- 8 row stitches on the bill
- Pre-curved bill with 4 needle sweatband
- Self fabric Velcro closure

**7110**



BROWN/  
HARDWOODS GREEN



VELCRO CLOSURE

**7110**

REALTREE CONSTRUCTED MID-WEIGHT BRUSHED  
COTTON TWILL W/REALTREE "WAVE SANDWICH"

QUANTITY	72pcs	144pcs	288pcs (3A)
Blank (pcs)	\$5.18	\$4.98	\$4.58
Emb 5k sts	\$9.16	\$8.56	\$7.96

- Mid weight brushed cotton
- Deluxe 4 needle sweatband
- Soft lining buckram
- Self fabric Velcro closure
- Pre-curved bill with RealTree Camo "Wave Sandwich"



BLACK/HARDWOODS



OLIVE/MAX-4

**7341**



POLY SNAP CLOSURE



MAX-4

**7341**

REALTREE CAMO MESH  
CAP

QUANTITY	72pcs	144pcs	288pcs (3A)
Blank (pcs)	\$6.18	\$5.98	\$5.58
Emb 5k sts	\$10.16	\$9.56	\$8.96

- Real Tree camo with solid mesh back
- Buckram and pre-curved bill
- Deluxe four needle sweatband
- Poly snap closure



REALTREE HARDWOODS

# REALTREE CAMO - CAMO / HUNTING

**7190**



VELCRO CLOSURE

REALTREE XTRA GREEN

<b>7190</b>	REALTREE ADVANTAGE CAP		
QUANTITY	72pcs	144pcs	288pcs (3A)
Blank (pcs)	\$6.58	\$6.38	\$5.98
Emb 5k sts	\$10.56	\$9.96	\$9.36

- 55% cotton 45% polyester
- Buckram and pre-curved bill
- Deluxe 4 needle sweatband
- Self fabric Velcro closure



REALTREE ALL PURPOSE GRAY



REALTREE ALL PURPOSE GREEN



REALTREE HARDWOODS GREEN



MAX-4



REALTREE HARDWOODS HD



REALTREE EXTRA CAMO

**7321**



VELCRO CLOSURE

OLIVE



<b>7321</b>	REALTREE BRUSHED COTTON CAP		
QUANTITY	72pcs	144pcs	288pcs (3A)
Blank (pcs)	\$6.58	\$6.38	\$5.98
Emb 5k sts	\$10.56	\$9.96	\$9.36

- Brushed cotton twill
- 4 rows top stitches on bill
- Deluxe 4 needles sweatband
- Realtree Velcro closure & bill



BLACK



NEON

**7351**



VELCRO CLOSURE



REALTREE HARDWOODS HD



KEEP YOUR GLASSES SECURE WITH THIS INNOVATIVE MULTI DIRECTION SUNGLASSES HOLDER

ADVANTAGE MAX-4



<b>7351</b>	REALTREE ADVANTAGE CAP		
QUANTITY	72pcs	144pcs	288pcs (3A)
Blank (pcs)	\$7.18	\$6.98	\$6.58
Emb 5k sts	\$11.16	\$10.56	\$9.96



# CAMO / HUNTING - GAME GUARD / DESERT GAME

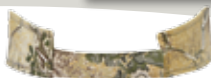
## 4720d



**NEW**  
CAMO / 2016

### 4720d DESERT GAME CAMO VISOR

QUANTITY	72pcs	144pcs	288pcs (3A)
Blank (pcs)	\$5.98	\$5.78	\$5.38
Emb 5k sts	\$9.96	\$9.36	\$8.76



VELCRO CLOSURE

- 55% cotton, 45% polyester blended
- 8 row stitches on the bill
- Pre-curved bill with 4 needle sweatband
- Self fabric Velcro closure



## 7210/D

**NEW**  
COLORS

7210/D  
STONE/  
DESERT GAME



7210/D  
NEON ORANGE/  
DESERT GAME

### 7210/D DESERT CAMO SERIES BRUSHED COTTON CAP

QUANTITY	72pcs	144pcs	288pcs (3A)
Blank (pcs)	\$5.58	\$5.38	\$4.98
Emb 5k sts	\$9.56	\$8.96	\$8.36



VELCRO CLOSURE

- Brushed cotton twill
- 6 rows top stitching on bill
- Deluxe 4 needle sweatband
- Game Guard Velcro closure & button

7210/D  
BLACK/  
DESERT GAME



7210 / STONE GAME GUARD



7210 / BLACK GAME GUARD



## 7220



OLIVE



VELCRO CLOSURE

### 7220 GAMEGUARD BRUSHED COTTON PANEL CAP

QUANTITY	72pcs	144pcs	288pcs (3A)
Blank (pcs)	\$5.58	\$5.38	\$4.98
Emb 5k sts	\$9.56	\$8.96	\$8.36

- Brushed cotton crown with Game Guard top bill
- 6 row top stitching on bill
- Deluxe 4 needle sweatband
- Matching crown, button, Velcro closure & underbill



KHAKI



NEON ORANGE

# GAME GUARD / DESERT GAME - CAMO / HUNTING

**7215**



STONE

RING BUCKLE CLOSURE

**7215** GAMEGUARD BRUSHED COTTON PATTERN CAP

QUANTITY	72pcs	144pcs	288pcs (3A)
Blank (pcs)	\$6.78	\$6.58	\$6.18
Emb 5k sts	\$10.76	\$10.16	\$9.56

- Pre decorated Game Guard pattern
- Brushed cotton twill
- Deluxe 4 needle sweatband
- Buckram & camo self fabric with ring buckle

**7225**



BLACK



VELCRO CLOSURE

**7225** GAMEGUARD BRUSHED COTTON CAP WITH CAMO TRIM

QUANTITY	72pcs	144pcs	288pcs (3A)
Blank (pcs)	\$6.78	\$6.58	\$6.18
Emb 5k sts	\$10.76	\$10.16	\$9.56

- Brushed cotton twill
- Game Guard trim on crown and top bill
- Matching camo underbill and Velcro strap
- Deluxe 4 needle sweatband
- Camo Velcro closure



STONE

**7231**



GAMEGUARD



NU-FIT BACK



**7231** GAMEGUARD MESH NU-FIT FITTED CAP

QUANTITY	72pcs	144pcs	288pcs (3A)
Blank (pcs)	\$7.18	\$6.98	\$6.58
Emb 5k sts	\$11.16	\$10.56	\$9.96

- Camo brushed cotton twill
- NU-FIT spandex sweatband
- One size fits most
- Olive mesh back



**7240**



CARAMEL



VELCRO CLOSURE WITH U.S.A FLAG HANGTAG

- Canvas cotton crown w/brass metal side eyelets
- 8 rows top stitches on bill
- Buckram and pre-curved bill
- Deluxe 4 needle sweatband
- Flag tag attached with closure
- Camo Velcro closure & button

**7240** GAMEGUARD BRUSHED CANVAS CAP

QUANTITY	72pcs	144pcs	288pcs (3A)
Blank (pcs)	\$6.58	\$6.38	\$5.98
Emb 5k sts	\$10.56	\$9.96	\$9.36





# CAMO / HUNTING - GAME GUARD / DESERT

## 7241D



**NEW**  
CAMO / 2016

## 7241D

DESERT GAME CAMO MESH CAP

QUANTITY	72pcs	144pcs	288pcs	(3A)
Blank (pcs)	\$6.18	\$5.98	\$5.58	
Emb 5k sts	\$10.16	\$9.56	\$8.96	



- Camo pattern with solid mesh back
- Buckram and pre-curved bill
- Deluxe four needle sweatband
- Poly snap closure

## 7250/D



7250/D  
DESERT GAME

◆ US Patent # 6,647,554

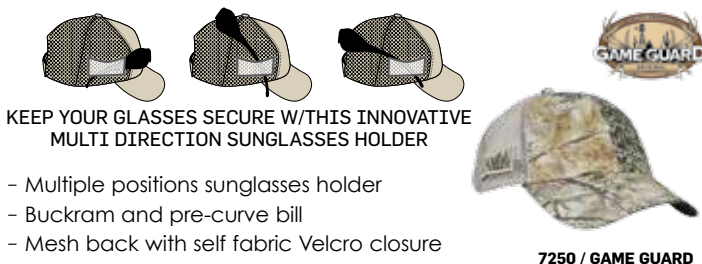
(SUNGLASSES NOT INCLUDED - FOR DEMO ONLY)



## 7250/D

DESERT SERIES CONSTRUCTED OPTI-GRAB SUNGLASSES HOLDER MESH CAP

QUANTITY	72pcs	144pcs	288pcs	(3A)
Blank (pcs)	\$7.58	\$7.38	\$6.98	
Emb 5k sts	\$11.56	\$10.96	\$10.36	



KEEP YOUR GLASSES SECURE W/THIS INNOVATIVE MULTI DIRECTION SUNGLASSES HOLDER

- Multiple positions sunglasses holder
- Buckram and pre-curve bill
- Mesh back with self fabric Velcro closure

7250 / GAME GUARD

## 7255



FOLD A BILL

## 7255

GAMEGUARD CONSTRUCTED FOLD A BILL CAP

QUANTITY	72pcs	144pcs	288pcs (3A)
Blank (pcs)	\$6.58	\$6.38	\$5.98
Emb 5k sts	\$10.56	\$9.96	\$9.36

- Memory board folding bill to retain shape
- Soft buckram and pre-curved olive bill with camo trim
- Game Guard Velcro closure

## 7280/D



7280/D  
DESERT GAME



## 7280

DESERT SERIES BRUSHED COTTON CAMO CAP

QUANTITY	72pcs	144pcs	288pcs (3A)
Blank (pcs)	\$5.78	\$5.58	\$5.18
Emb 5k sts	\$9.76	\$9.16	\$8.56

- Game Guard brushed cotton twill
- Self fabric Velcro closure
- Soft buckram and pre-curved bill
- 6 row stitching on bill



7280 / GAME GUARD



# CAMO / HUNTING - GAME GUARD / DESERT



- 600D polyester with PVC backing
- Poly-web shoulder straps and handles
- Front zippered compartment
- Side mesh bottle holder
- Size: 11" x 9" x 7"



TOP FLAP ACCESS

<b>B2311</b>	GAMEGUARD COOLER BAG		
QUANTITY	72pcs	144pcs	288pcs (3A)
Blank (pcs)	\$27.98	\$26.98	\$25.98
Emb 5k sts	\$33.96	\$31.76	\$29.96



- 600D polyester with PVC backing
- Poly-web shoulder and carrying straps
- One top, side and two end zippered compartments
- Mesh bottle holders
- Size 20" x 11" x 10"



<b>B2520</b>	GAMEGUARD DUFFEL BAG		
QUANTITY	72pcs	144pcs	288pcs (3A)
Blank (pcs)	\$37.98	\$36.98	\$35.98
Emb 5k sts	\$43.96	\$41.76	\$39.96



- 600D polyester with PVC backing
- Poly-web shoulder straps
- Zippered storage compartments
- Two mesh bottle holders
- Size: 17.5" x 12" x 5"



<b>B2817</b>	GAMEGUARD ALL PURPOSE BACKPACK		
QUANTITY	72pcs	144pcs	288pcs (3A)
Blank (pcs)	\$37.98	\$36.98	\$35.98
Emb 5k sts	\$43.96	\$41.76	\$39.96



- Game Guard printed 7 oz. cotton twill
- Tunnel fed straps for quick fit adjustment
- Size: 22"(W) x 30"(L) 7 oz.



22"(W) X 30"(L)

<b>A9830GG</b>	GAMEGUARD ADJUSTABLE APRON		
QUANTITY	72pcs	144pcs	288pcs (3A)
Blank (pcs)	\$22.58	\$22.38	\$21.98
Emb 5k sts	\$26.56	\$25.96	\$25.36

# CAMO / HUNTING - KINGS CAMO

**4740**



KING'S SNOW CAMO

**NEW**  
CAMO / 2016

**4740** KING'S CAMO VISOR

QUANTITY	72pcs	144pcs	288pcs (3A)
Blank (pcs)	\$5.98	\$5.78	\$5.38
Emb 5k sts	\$9.96	\$9.36	\$8.76

- 55% cotton, 45% polyester blended
- 8 row stitches on the bill
- Pre-curved bill with 4 needle sweatband
- Self fabric Velcro closure



VELCRO CLOSURE



**7440**

**NEW**  
COLORS



KING'S SNOW CAMO/BLACK

**7440** KING'S CAMOUFLAGE MESH CAP

QUANTITY	72pcs	144pcs	288pcs (3A)
Blank (pcs)	\$6.18	\$5.98	\$5.58
Emb 5k sts	\$10.16	\$9.56	\$8.96

KING'S SNOW CAMO/WHITE



- King's Camo front panel with camo under bill
- Buckram and pre-curved bill
- Mesh back and camo Velcro closure



VELCRO CLOSURE





# CAMO / HUNTING - KINGS CAMO

**7451**



**NEW**  
CAMO / 2016

<b>7451</b>		KINGS CAMO CONSTRUCTED OPTI-GRAB SUNGLASSES HOLDER MESH CAP		
QUANTITY	72pcs	144pcs	288pcs (3A)	
Blank (pcs)	\$7.18	\$6.98	\$6.58	
Emb 5k sts	\$11.16	\$10.56	\$9.96	



VELCRO CLOSURE

- Multiple positions sunglasses holder
- Buckram and pre-curve ved bill
- Mesh back with self fabric Velcro closure



KEEP YOUR GLASSES SECURE W/THIS INNOVATIVE MULTI DIRECTION SUNGLASSES HOLDER



(SUNGLASSES NOT INCLUDED - FOR DEMO ONLY) ♦ US Patent # 6,647,554

**7480**



**NEW**  
COLORS

<b>7480</b>		KING'S CAMOUFLAGE CAP		
QUANTITY	72pcs	144pcs	288pcs (3A)	
Blank (pcs)	\$6.58	\$6.38	\$5.98	
Emb 5k sts	\$10.56	\$9.96	\$9.36	



VELCRO CLOSURE



- King's Camo poly twill
- 6 rows stitches on bill
- Buckram and pre-curved bill
- Self fabric Velcro closure



KING'S  
**MOUNTAIN**  
SHADOW



KING'S  
**DESERT**  
SHADOW



## CAMO GEAR - CAMO / HUNTING



Blaze Orange 600D polyester  
with PVC backing

SIZE: 16" x 6" x 4"



New Break Up camo  
600D polyester with PVC backing

SIZE: 16" x 6" x 4"



Break Up camo  
600D polyester with PVC backing

SIZE: 19" x 6" x 7"

<b>B0006</b>	BLAZE ORANGE FANNY PACK		
QUANTITY	72pcs	144pcs	288pcs (3A)
Blank (pcs)	\$17.98	\$16.98	\$15.98
Emb 5k sts	\$23.96	\$21.76	\$19.96

<b>B1007</b>	ALL PURPOSE FANNY PACK		
QUANTITY	72pcs	144pcs	288pcs (3A)
Blank (pcs)	\$23.98	\$22.98	\$21.98
Emb 5k sts	\$29.96	\$27.76	\$25.96

<b>B1008</b>	WATER HOLDER FANNY PACK		
QUANTITY	72pcs	144pcs	288pcs (3A)
Blank (pcs)	\$29.98	\$28.98	\$27.98
Emb 5k sts	\$35.96	\$33.76	\$31.96

<b>K1010</b>	FLEECE BLANKET		
QUANTITY	72pcs	144pcs	288pcs (3A)
Blank (pcs)	\$43.98	\$41.98	\$39.98
Emb 5k sts	\$49.96	\$46.76	\$43.96



WINTER  
BREAK UP

100% polyester heavy weight fleece  
with convenient travel strap.

SIZE: 50" x 60"

# CAMO GEAR - CAMO / HUNTING

**B1213**



**B1213**

LUNCH BAG HOLDER/COOLER

QUANTITY	72pcs	144pcs	288pcs (3A)
Blank (pcs)	\$25.98	\$24.98	\$23.98
Emb 5k sts	\$31.96	\$29.76	\$27.96



LOADED LUNCH BOX



INSULATION SHOWN

- New Break Up camo
- 600D polyester with PVC backing

SIZE: 13" x 12" x 5.20"



**B1311**



OPEN DISPLAYED

- New Break Up camo
- 600D polyester with PVC backing

SIZE: 11" x 9" x 7"

**B1311**

TOP OPEN COOLER BAG

QUANTITY	72pcs	144pcs	288pcs (3A)
Blank (pcs)	\$29.98	\$28.98	\$27.98
Emb 5k sts	\$35.96	\$33.76	\$31.96





## CAMO / HUNTING - CAMO GEAR

**B1817****B1817**ALL PURPOSE  
BACK PACK

QUANTITY	72pcs	144pcs	288pcs (3A)
Blank (pcs)	\$55.98	\$54.98	\$53.98
Emb 5k sts	\$61.96	\$59.76	\$57.96

New Break Up camo  
600D polyester with PVC backing

**B1818**

BACK VIEW



New Break Up camo  
600D polyester with PVC backing

**B1818**HEAVY  
DUTY BACK PACK

QUANTITY	72pcs	144pcs	288pcs (3A)
Blank (pcs)	\$61.98	\$60.98	\$59.98
Emb 5k sts	\$67.96	\$65.76	\$63.96



# CAMO GEAR - CAMO / HUNTING



PINK BREAK UP

<b>B1520</b>	20" DUFFEL BAG			
	QUANTITY	72pcs	144pcs	288pcs (3A)
	Blank (pcs)	\$51.98	\$50.98	\$49.98
	Emb 5k sts	\$57.96	\$55.76	\$53.96

New Break Up camo  
600D polyester with PVC backing  
SIZE: 20" x 11" x 10"



New Break Up camo  
600D polyester with PVC backing  
SIZE: 24" x 12" x 10"

<b>B1524</b>	24" DUFFEL BAG			
	QUANTITY	72pcs	144pcs	288pcs (3A)
	Blank (pcs)	\$61.98	\$60.98	\$59.98
	Emb 5k sts	\$67.96	\$65.76	\$63.96



New Break Up camo  
600D polyester with PVC backing  
SIZE: 30" x 15" x 14"

<b>B1530</b>	30" DUFFEL BAG			
	QUANTITY	72pcs	144pcs	288pcs (3A)
	Blank (pcs)	\$67.98	\$66.98	\$65.98
	Emb 5k sts	\$73.96	\$71.76	\$69.96

## CAMO / HUNTING - CAMO GEAR

**B2311** GAMEGUARD FLIP TOP COOLER BAG

QUANTITY	72pcs	144pcs	288pcs (3A)
Blank (pcs)	\$27.98	\$26.98	\$25.98
Emb 5k sts	\$33.96	\$31.76	\$29.96



- 600D polyester with PVC backing
- Poly-web shoulder straps and handles
- Front zippered compartment
- Side mesh bottle holder



SIZE: 11" x 9" x 7"

**B2520** GAMEGUARD 20" DUFFEL BAG

QUANTITY	72pcs	144pcs	288pcs (3A)
Blank (pcs)	\$37.98	\$36.98	\$35.98
Emb 5k sts	\$43.96	\$41.76	\$39.96

- 600D polyester with PVC backing
- Poly-web shoulder and carrying straps
- One top, side and two end zippered compartments
- Mesh bottle holders

SIZE: 20" x 11" x 10"

**B2817** GAMEGUARD MULTI PURPOSE BACK PACK

QUANTITY	72pcs	144pcs	288pcs (3A)
Blank (pcs)	\$37.98	\$36.98	\$35.98
Emb 5k sts	\$43.96	\$41.76	\$39.96

- 600D polyester with PVC backing
- Poly-web shoulder straps
- Zippered storage compartments
- Two mesh bottle holders

SIZE: 17.5" x 12" x 5"



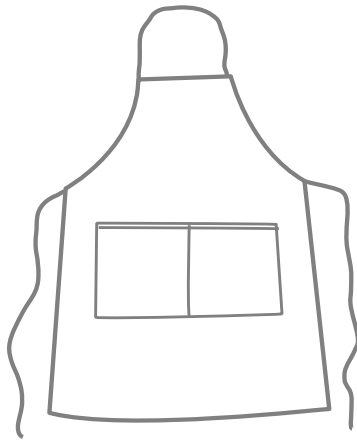


# CAMO GEAR - CAMO / HUNTING

<b>A9830MO</b>	<b>TWO POCKET ADJUSTABLE APRON</b>		
QUANTITY	72pcs	144pcs	288pcs (3A)
Blank (pcs)	\$18.58	\$18.38	\$17.98
Emb 5k sts	\$22.56	\$21.96	\$21.36

- 55% cotton, 45% polyester cotton blended, with quick adjustable straps.

SIZE: 22" (W) x 30" (H) 7oz.



<b>A9830GG</b>	<b>GAME GUARD TWO POCKET ADJUSTABLE APRON</b>		
QUANTITY	72pcs	144pcs	288pcs (3A)
Blank (pcs)	\$22.58	\$22.38	\$21.98
Emb 5k sts	\$26.56	\$25.96	\$25.36

- Game Guard printed 7oz. cotton twill
- Tunnel fed straps for quick fit adjustment

SIZE: 22" (W) x 30" (H) 7oz.





# BUCKET HATS

## 9100



STRAWBERRY (M-L)

SIZE: S/M • M/L

## 9100

**WASHED BRUSHED COTTON  
Twill BUCKET HAT**

QUANTITY	72pcs	144pcs	288pcs (3A)
Blank (pcs)	\$5.58	\$5.38	\$4.98
Emb 5k sts	\$9.56	\$8.96	\$8.36

- 100% washed brushed cotton twill
- Brass net eyelets
- Contrasting trim



LEMON (S-M)



MANGO



TANGERINE (M-L)

## 9120

ST. BLUE/  
KHAKE

SIZE: M/L • L/XL

## 9120

**CHINO WASHED BRUSHED  
COTTON Twill BUCKET HAT**

QUANTITY	72pcs	144pcs	288pcs (3A)
Blank (pcs)	\$4.58	\$4.38	\$3.98
Emb 5k sts	\$8.56	\$7.96	\$7.36

- Chino washed heavy cotton twill
- Brass net eyelets
- Contrasting two tone trim band



HONEY/OLIVE



CHARCOAL/KHAKE



FOREST/KHAKE



RED/KHAKE



BURGUNDY/KHAKE

## 9130



KHAKE (L-M)

SIZE: M • L • YOUTH



DARK GREEN (M-Y)



NAVY



CHARCOAL (M-Y)



KHAKE (L-M)



DENIM



WHITE (Y)

- 100% washed pigment dyed cotton twill
- Sewn eyelets

## 9130

**PIGMENT DYED COTTON  
WASHED BUCKET HAT**

QUANTITY	72pcs	144pcs	288pcs (3A)
Blank (pcs)	\$5.44	\$5.24	\$4.84
Emb 5k sts	\$9.42	\$8.82	\$8.22

# BUCKET HATS

**9150**



**KHAKI**

**9150**

**SUN BLOCKER LARGE BILL FLAP SUN SHIELD BUCKET HAT**

QUANTITY	72pcs	144pcs	288pcs (3A)
Blank (pcs)	\$16.58	\$16.38	\$15.98
Emb 5k sts	\$20.56	\$19.96	\$19.36



**DRAWSTRING CLOSURE**



**OLIVE**

**NEW**

- 100% Microfiber
- Moisture wicking sweatband
- UPF 50+ UV ray protection
- Unisex one size fits most
- Protects neck and ears. Foldable easy to carry

**9180S**



**SIZE: M · L**  
**SIZE: ADULT - YOUTH**  
**(WITH ELASTIC SWEATBAND)**

**9180S**  
**NAVY**

**9180S/T**

**COTTON WASHED BUCKET HAT**

QUANTITY	72pcs	144pcs	288pcs (3A)
Blank (pcs)	\$4.58	\$4.38	\$3.98
Emb 5k sts	\$8.56	\$7.96	\$7.36

- 100% washed cotton twill
- Metal side eyelets



**9180T**



**SIZE: M · L**  
**SIZE: ADULT - YOUTH**  
**(WITH ELASTIC SWEATBAND)**

**9180T**  
**KHAKI/**  
**CHARCOAL**



**CHARCOAL**



**DENIM**



**DARK GREEN**



**KHAKI/NAVY (YOUTH ONLY)**



**WHITE/NAVY**



**KHAKI**



**CHARCOAL/KHAKI (YOUTH ONLY)**



**NAVY/KHAKI**



**KHAKI/DARK GREEN**

# CUSTOM FACTORY DIRECT

## CUSTOM FACTORY DIRECT

INCLUDES 5000 STITCHES

Build A Custom Retail Quality Cap at a Promotional Product Price

- Mid weight brushed cotton
- Sewn Eyelets
- Pre-curved bill
- Deluxe 4 needle sweatband



HUNDREDS of COMBINATIONS TO CHOOSE FROM:

### 1 CHOOSE A CROWN SHAPE

- Unconstructed     Soft buckram     Firm buckram

### 2 CHOOSE A BILL



Regular    Traditional sandwich    Piped sandwich

### 3 CHOOSE A CLOSURE



"Comfort Fit" Elastic    Velcro    Self fabric shoe buckle    Polo slide

### 4 CHOOSE A COLOR



black    dk Gray    navy    royal    dk green    lt blue    pink    red    cardinal    brown    khaki    stone    white

CROWN Color \_\_\_\_\_ BILL Color \_\_\_\_\_ SANDWICH Color \_\_\_\_\_



# BUILD YOUR CUSTOM CAP

CUSTOM

1

## CHOOSE A STYLE

All of our crown cuts provide ultimate comfort and fit. Choose from any of these shapes or profiles, relaxed or constructed fits for the base of your custom piece.



STYLE

2

## CHOOSE A FABRIC

Select a stock fabric and color from this catalogue or choose your own color with our "No Limits" dye options.



FABRIC

3

## CHOOSE A BILL TREATMENT

All of our Pre-curved high density memory bills can be modified to display various custom bill treatments.



BILL

4

## CHOOSE A DECORATION

At KC Caps we believe that decorations should not be taken lightly. We offer many types of embellishment techniques which can be combined to create a unique custom look.



DECORATIONS

5

## CHOOSE A CLOSURE

From "Comfort Fit" elastic backs to Nu-Fit fitted or Velcro, there are many different types of closures which are available on our custom hats.



CLOSURE

6

## CHOOSE YOUR FINISH & DETAIL

Custom means detail... so why stop at just the shapes, fabrics, closures and decorations? Inside detailing and finishing complete your custom piece.



FINISH &amp; DETAIL

# CUSTOM – CAPS CONCEPTS



**STYLE 0001**  
Screen print with gold foil cap



**STYLE 0002**  
Screen print fabric with woven label



**STYLE 0003**  
Direct embroidery



**STYLE 0004**  
Direct 3D Embroidery on linen fabric cap



**STYLE 0005**  
Printed sewn patch



**STYLE 0006**  
Heavy stretch fleece cap with sewn on patch and faux leather bill

## CAPS CONCEPTS - CUSTOM



**STYLE 0007**  
Leather emboss patch



**STYLE 0008**  
Screen print with 3D rubber print



**STYLE 0009**  
Water base screen print with cotton whip stitch



**STYLE 0010**  
Felt application



**STYLE 0011**  
Direct embroidery



**STYLE 0012**  
Silver foil print



# CUSTOM - OVERSEAS CUSTOM EMBROIDERY APPLICATIONS

## CLOSURES



A. Velcro



B. Buckle with Grommet



C. Stretchable Velcro



D. Ring Buckle



E. Rubber Band/Plastic



F. Leather Strap



G. Embossed Buckle



H. Plastic Snap

## BILLS



A. Standard



B. Traditional Sandwich



C. Piped Sandwich



D. Roll Up Sandwich



E. Woven Text Sandwich



F. Laser Cut Sandwich



G. Leather Piping



H. Double Color Sandwich



I. Computer Stitching



J. Distressed Bill



K. Under-Layer Embroidery



L. Custom Plaid Felt

## SWEATBAND



A. Standard



B. 4-Needle Stitches



C. Terry Cloth



D. Nu-Fit® Elastic Band

## WOVEN LABEL APPLICATIONS



A. Closure



B. Closure Flag



C. Crown Flag



D. Above Arch Flag

# OVERSEAS CUSTOM EMBROIDERY APPLICATIONS - CUSTOM

## SPECIAL APPLICATIONS



A. Sunglasses Holder



B. Contrasting Stitching



C. Crown Taping



D. Above Arch



E. Mesh Embroidery



F. Crown Embroidery



G. Bill Embroidery



H. Gel Printing

## 3-D EMBROIDERY



## TAPING



A. Regular



B. Contrasting



C. Imprinted

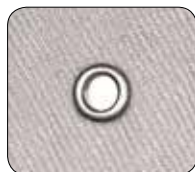


D. Taping Over Mesh

## EYELETS



A. Sewn



B. Silver Metal



C. Painted Eyelet



D. Brass Eyelet



E. Mesh Painted



F. Mesh Eyelet

\* Logos shown throughout this catalog are for illustrative purposes only. They do not imply endorsement by the logo owner.

# RACING CAPS

## AS01

QUANTITY	72pcs	144pcs	288pcs (3A)
Blank (pcs)	\$6.58	\$6.38	\$5.98
Emb 5k sts	\$10.56	\$9.96	\$9.36



AS01

AS05

AS06

AS04



## AS04 / AS05 / AS06

QUANTITY	72pcs	144pcs	288pcs (3A)
Blank (pcs)	\$6.58	\$6.38	\$5.98
Emb 5k sts	\$10.56	\$9.96	\$9.36

AS07

AS08

AS09



## AS07 / AS08 / AS09

QUANTITY	72pcs	144pcs	288pcs (3A)
Blank (pcs)	\$6.58	\$6.38	\$5.98
Emb 5k sts	\$10.56	\$9.96	\$9.36



# RACING CAPS



FL01



FL02



FL03



FL04

## FL01 / FL02 / FL03

QUANTITY	72pcs	144pcs	288pcs (3A)
Blank (pcs)	\$6.58	\$6.38	\$5.98
Emb 5k sts	\$10.56	\$9.96	\$9.36

## FL04

QUANTITY	72pcs	144pcs	288pcs (3A)
Blank (pcs)	\$6.18	\$5.98	\$5.58
Emb 5k sts	\$10.16	\$9.56	\$8.96



FL05



FL07

## FL05 / FL07

QUANTITY	72pcs	144pcs	288pcs (3A)
Blank (pcs)	\$7.18	\$6.98	\$6.58
Emb 5k sts	\$11.16	\$10.56	\$9.96



FL08

## FL08

QUANTITY	72pcs	144pcs	288pcs (3A)
Blank (pcs)	\$6.58	\$6.38	\$5.98
Emb 5k sts	\$10.56	\$9.96	\$9.36



FL09



FL10



FL11



FL12

## FL09 / FL10 / FL11 / FL12

QUANTITY	72pcs	144pcs	288pcs (3A)
Blank (pcs)	\$7.18	\$6.98	\$6.58
Emb 5k sts	\$11.16	\$10.56	\$9.96

# RACING CAPS



HR01



HR02



HR03

<b>HR01 / HR02 / HR03</b>			
QUANTITY	72pcs	144pcs	288pcs (3A)
Blank (pcs)	\$6.58	\$6.38	\$5.98
Emb 5k sts	\$10.56	\$9.96	\$9.36



HR04

<b>HR04</b>			
QUANTITY	72pcs	144pcs	288pcs (3A)
Blank (pcs)	\$5.78	\$5.58	\$5.18
Emb 5k sts	\$9.76	\$9.16	\$8.56



HR05



HR06



HR07



HR08

<b>HR05 / HR06 / HR07 / HR08</b>			
QUANTITY	72pcs	144pcs	288pcs (3A)
Blank (pcs)	\$6.18	\$5.98	\$5.58
Emb 5k sts	\$10.16	\$9.56	\$8.96



ST03

<b>ST03</b>			
QUANTITY	72pcs	144pcs	288pcs (3A)
Blank (pcs)	\$7.78	\$7.58	\$7.18
Emb 5k sts	\$11.76	\$11.16	\$10.56



ST04

<b>ST04</b>			
QUANTITY	72pcs	144pcs	288pcs (3A)
Blank (pcs)	\$6.18	\$5.98	\$5.58
Emb 5k sts	\$10.16	\$9.56	\$8.96



ST05



ST06

<b>ST05 / ST06</b>			
QUANTITY	72pcs	144pcs	288pcs (3A)
Blank (pcs)	\$7.18	\$6.98	\$6.58
Emb 5k sts	\$11.16	\$10.56	\$9.96

# RACING CAPS



TR01

TR03

TR01 / TR03			
QUANTITY	72pcs	144pcs	288pcs (3A)
Blank (pcs)	\$9.18	\$8.98	\$8.58
Emb 5k sts	\$13.16	\$12.56	\$11.96



TR04

TR04			
QUANTITY	72pcs	144pcs	288pcs (3A)
Blank (pcs)	\$7.18	\$6.98	\$6.58
Emb 5k sts	\$11.16	\$10.56	\$9.96



TR05

TR06

TR07

TR05 / TR06 / TR07			
QUANTITY	72pcs	144pcs	288pcs (3A)
Blank (pcs)	\$8.18	\$7.98	\$7.58
Emb 5k sts	\$12.16	\$11.56	\$10.96



TR08

TR08			
QUANTITY	72pcs	144pcs	288pcs (3A)
Blank (pcs)	\$6.18	\$5.98	\$5.58
Emb 5k sts	\$10.16	\$9.56	\$8.96



SF01

SF01			
QUANTITY	72pcs	144pcs	288pcs (3A)
Blank (pcs)	\$12.58	\$12.38	\$11.98
Emb 5k sts	\$16.56	\$15.96	\$15.36



SF02

SF02			
QUANTITY	72pcs	144pcs	288pcs (3A)
Blank (pcs)	\$9.18	\$8.98	\$8.58
Emb 5k sts	\$13.16	\$12.56	\$11.96



WFM03

WFM03 / WFM04			
QUANTITY	72pcs	144pcs	288pcs (3A)
Blank (pcs)	\$5.58	\$5.38	\$4.98
Emb 5k sts	\$9.56	\$8.96	\$8.36



WFM04



# APRONS

<b>A9324</b>	<b>LARGE TWO POCKET BIB APRON</b>		
QUANTITY	72pcs	144pcs	288pcs (3A)
Blank (pcs)	\$6.58	\$6.38	\$5.98
Emb 5k sts	\$10.56	\$9.96	\$9.36



- 65% polyester/ 35% cotton twill
- Size: 20"(W) x 24"(L), 7.5 oz.
- Natural (100% cotton canvas)



<b>A9328</b>	<b>LARGE TWO POCKET APRON</b>		
QUANTITY	72pcs	144pcs	288pcs (3A)
Blank (pcs)	\$7.38	\$7.18	\$6.78
Emb 5k sts	\$11.36	\$10.76	\$10.16

- 65% polyester/ 35% cotton twill
- Size: 24"(W) x 28"(L), 7.5 oz.
- Natural (100% cotton canvas)



<b>A9420</b>	<b>THREE POCKET WAIST APRON</b>		
QUANTITY	72pcs	144pcs	288pcs (3A)
Blank (pcs)	\$4.98	\$4.78	\$4.38
Emb 5k sts	\$8.96	\$8.36	\$7.76

- 65% polyester/ 35% cotton twill
- Size: 20"(W) x 10"(L), 7.5 oz.
- Natural (100% cotton canvas)



# APRONS



20"(W) X 30"(L)

## A9730

### TWO POCKET ADJUSTABLE APRON

QUANTITY	72pcs	144pcs	288pcs (3A)
Blank (pcs)	\$8.38	\$8.18	\$7.78
Emb 5k sts	\$12.36	\$11.76	\$11.16

- 65% polyester/ 35% cotton twill
- Size: 20"(W) x 30"(L) 7.5 oz.
- Adjustable pulling straps



KHAKI



22"(W) X 30"(L)

## A9830MO

### TWO POCKET ADJUSTABLE APRON

QUANTITY	72pcs	144pcs	288pcs (3A)
Blank (pcs)	\$18.58	\$18.38	\$17.98
Emb 5k sts	\$22.56	\$21.96	\$21.36

- 55% cotton, 45% polyester cotton blended
- Size: 22"(W) x 30"(L) 7 oz.
- Adjustable straps

BREAK UP



22"(W) X 30"(L)

## A9830GG

### GAMEGUARD TWO POCKET ADJUSTABLE APRON

QUANTITY	72pcs	144pcs	288pcs (3A)
Blank (pcs)	\$22.58	\$22.38	\$21.98
Emb 5k sts	\$26.56	\$25.96	\$25.36

- Game Guard printed 7oz. cotton twill
- Size: 22"(W) x 30"(L) 7 oz.
- Adjustable straps

GAME GUARD

# KNIT BEANIES

## W1600



GRAY

- Thick weave waffle beanie in 100% acrylic
- Perfect for chilly snowy days or chill'en Apres Ski
- Approx. 8 - 8½" long
- One size fits most

W1600	THICK WEAVE WAFFLE KNIT BEANIE		
QUANTITY	72pcs	144pcs	288pcs (3A)
Blank (pcs)	\$4.58	\$4.38	\$3.98
Emb 5k sts	\$8.56	\$7.96	\$7.36



BLACK                      GRAY                      WHITE



NAVY                      PINK                      ROYAL

## W1700



SAFETY GREEN

- 100% acrylic
- Approximately 8 - 8½" long
- Solid color with contrasting stripe
- One size fits most



CHARCOAL                      LIGHT GRAY                      MAROON                      BLACK                      WHITE



NAVY                      RED                      PINK                      NEON ORANGE                      SAFETY GREEN



ROYAL                      KHAKI                      YELLOW                      FOREST GREEN                      SKY BLUE

W1700	KNIT BEANIE		
QUANTITY	72pcs	144pcs	288pcs (3A)
Blank (pcs)	\$3.38	\$3.18	\$2.78
Emb 5k sts	\$7.36	\$6.76	\$6.16



# KNIT BEANIES

**W1710**



<b>W1710</b>	<b>LONG KNIT TOQUE</b>		
QUANTITY	72pcs	144pcs	288pcs (3A)
Blank (pcs)	\$4.18	\$3.98	\$3.58
Emb 5k sts	\$8.16	\$7.56	\$6.96

- 100% acrylic
- Approximately 12" Long
- One size fits most

FOREST GREEN



NEON ORANGE



SAFETY GREEN



CHARCOAL



LIGHT GRAY



MAROON



BLACK



NAVY



KHAKI



YELLOW



SKY BLUE



WHITE



RED



ROYAL



PINK

**W1711**

<b>W1711</b>	<b>POM POM TOQUE</b>		
QUANTITY	72pcs	144pcs	288pcs (3A)
Blank (pcs)	\$4.58	\$4.38	\$3.98
Emb 5k sts	\$8.56	\$7.96	\$7.36



BLACK



CHARCOAL



NAVY

- 100% acrylic
- Approximately 12" long with fashion pom pom on the top
- One size fits most



PINK

# KNIT BEANIES

## W1720



LIGHT GRAY

<b>W1720</b> VISOR KNIT BEANIE		72pcs	144pcs	288pcs (3A)
QUANTITY				
Blank (pcs)	\$4.58	\$4.38	\$3.98	
Emb 5k sts	\$8.56	\$7.96	\$7.36	

- 100% acrylic
- Solid color with a visor
- Approximately 8½" long
- One size fits most



BLACK

NAVY

RED

ROYAL

FOREST GREEN

WHITE

## W1721



CAMO

<b>W1721</b> SURPLUS BEANIE		72pcs	144pcs	288pcs (3A)
QUANTITY				
Blank (pcs)	\$4.98	\$4.78	\$4.38	
Emb 5k sts	\$8.96	\$8.36	\$7.76	

- 100% acrylic surplus beanie with visor
- Approximately 5" high
- One size fits most



OLIVE

NAVY

BLACK

## W1730



BLACK/RED

<b>W1730</b> STRIPE KNIT BEANIE		72pcs	144pcs	288pcs (3A)
QUANTITY				
Blank (pcs)	\$3.38	\$3.18	\$2.78	
Emb 5k sts	\$7.36	\$6.76	\$6.16	



PINK/WHITE

ROYAL/WHITE

KELLY/WHITE

LIGHT BLUE/WHITE

RED/BLACK

NAVY/WHITE

BLACK/WHITE

NAVY/RED

- 100% acrylic
- Solid color with contrasting stripe
- Approximately 8 - 8½" long
- One size fits most

# KNIT BEANIES

## W1740



CAMO

- 100% acrylic
- Approximately 8 - 8½" long
- Camo pattern beanie
- Reversible orange color
- One size fits most

## W1740

### REVERSIBLE CAMO NEON ORANGE BEANIE

QUANTITY	72pcs	144pcs	288pcs (3A)
Blank (pcs)	\$4.78	\$4.58	\$4.18
Emb 5k sts	\$8.76	\$8.16	\$7.56



NEON ORANGE



FOLDING VARIATIONS

## W1741



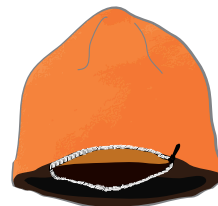
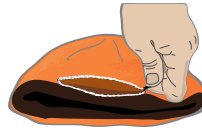
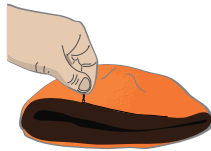
BREAK UP

## W1741

### REVERSIBLE CAMO FLEECE BEANIE

QUANTITY	72pcs	144pcs	288pcs (3A)
Blank (pcs)	\$8.50	\$8.30	\$7.90
Emb 5k sts	\$12.48	\$11.88	\$11.28

- 100% Polyester Fleece
- Approximately 8 - 8½" long
- Front panel all-purpose pocket with zipper
- Double-faced to enable embroidery on either side with no stitches showing through the reverse
- One size fits most



EASY ACCESS VIA ZIPPER POCKET FOR EMBROIDERY

HIDE YOUR VALUABLES

## W1745



VISTA

**NEW**  
CAMO / 2016

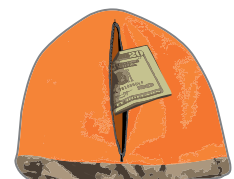
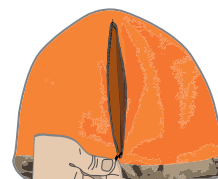
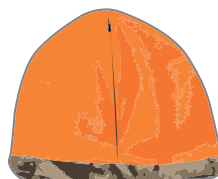
## W1745

### NEXT CAMO REVERSIBLE CAMO FLEECE BEANIE

QUANTITY	72pcs	144pcs	288pcs (3A)
Blank (pcs)	\$8.50	\$8.30	\$7.90
Emb 5k sts	\$12.48	\$11.88	\$11.28

- 100% polyester fleece
- Approximately 8 - 8½" long
- Front panel all-purpose pocket with zipper
- Double-faced to enable embroidery on either side with no stitches showing through the reverse
- One size fits most

next G1  
**VISTA**



EASY ACCESS VIA ZIPPER POCKET FOR EMBROIDERY



# FLEECE BEANIES

## W1800



ROYAL

### W1800

#### DELUXE FLEECE BEANIE

QUANTITY	72pcs	144pcs	288pcs (3A)
Blank (pcs)	\$4.38	\$4.18	\$3.78
Emb 5k sts	\$8.36	\$7.76	\$7.16

- 100% polyester double layer fleece
- Approximately 8 - 8½" long
- One size fits most



BLACK

NAVY

PINK

DARK GRAY

RED

WHITE

## W1810



RED

### W1810

#### HEMMED FLEECE BEANIE

QUANTITY	72pcs	144pcs	288pcs (3A)
Blank (pcs)	\$2.78	\$2.58	\$2.18
Emb 5k sts	\$6.76	\$6.16	\$5.56

- Hemmed double layer fleece beanie
- Approximately 8½" long
- One size fits most



RED

PINK

WINE

DARK GREEN

ROYAL

NAVY

HEATHER GRAY

BLACK

## W1900



DARK GRAY

SIDE PROFILE

EAR FLAP FOLDED UP

### W1900

#### FLAP BEANIE WITH FLEECE INSULATION

QUANTITY	72pcs	144pcs	288pcs (3A)
Blank (pcs)	\$4.58	\$4.38	\$3.98
Emb 5k sts	\$8.56	\$7.96	\$7.36

- 100% acrylic
- Lined with soft fleece for insulation
- One size fits most



BLACK

NAVY

DARK GREEN

RED

# FLEECE SCARVES

Super sized for super warmth...100% polar fleece scarf, fringed at both ends with two 7"x 8½" hand warmer pockets. Overall size approximately 74" long x 17½" wide

<b>W1850</b>	<b>FLEECE POCKET SCARF</b>		
QUANTITY	72pcs	144pcs	288pcs (3A)
Blank (pcs)	\$6.58	\$6.38	\$5.98
Emb 5k sts	\$10.56	\$9.96	\$9.36

## W1850



BLACK



DARK GREEN



HEATHER GRAY



WINE



RED



PINK



BLACK



ROYAL



NAVY

## W1850/P

<b>W1850/P</b>	<b>FLEECE POCKET SCARF WITH PRINT</b>		
QUANTITY	72pcs	144pcs	288pcs (3A)
Blank (pcs)	\$8.58	\$8.38	\$7.98
Emb 5k sts	\$12.56	\$11.96	\$11.36



CHEETAH (W1850P)



ZEBRA (W1850P)

Super sized for super warmth...100% polar fleece scarf, fringed at both ends with two 7"x 8½" hand warmer pockets. Overall size approximately 74" long x 17½" wide

# NAPA BLANKETS

<b>K2000</b>	<b>SUPER-LUX PLUSH BLANKET</b>		
	<b>QUANTITY</b>	72pcs	144pcs
Blank (pcs)	\$17.98	\$15.98	\$13.98
Emb 5k sts	\$23.96	\$20.76	\$17.96

- 15.25 oz. 100% super micro plush polyester
- Double needle edge fold
- Decorative satin ribbon with Velcro closure
- Size: 50" x 60"



VANILLA



EMERALD GREEN



COBALT BLUE



BLACK



LATTE



GRAY



BROWN





# NAPA BLANKETS

## K2802

### TRAVEL PANDA FLEECE BLANKET

- 100% polyester heavy weight anti-pill "Panda" fleece
- for ultimate performance, warmth and comfort.
- Black whip stitch trim accentuates the blanket beautifully.
- Convenient nylon strap for easy carrying.
- Size: 50" x 60"

### K2802 TRAVEL PANDA FLEECE BLANKET

QUANTITY	72pcs	144pcs	288pcs (3A)
Blank (pcs)	\$13.98	\$11.98	\$9.98
Emb 5k sts	\$19.96	\$16.76	\$13.96



RED



NAVY



ROYAL



HEATHER GRAY



BLACK



DARK GREEN



# NAPA BLANKETS

<b>K3000</b>	<b>DELUXE MICROPLUSH SLEEVED BLANKET</b>		
QUANTITY	72pcs	144pcs	288pcs (3A)
Blank (pcs)	\$23.98	\$21.98	\$19.98
Emb 5k sts	\$29.96	\$26.76	\$23.96



COBALT BLUE



BLACK



FREE RETAIL PACKAGING



LATTE



BROWN



## DELUXE MICROPLUSH SLEEVED BLANKET

- 100% super plush polyester sleeved fleece blanket with pocket.
- Double needle edge fold.
- Size: 52" x 70"

## POLAR FLEECE SLEEVED BLANKET

- 100% super soft polyester "anti-pill" sleeved fleece blanket with pocket.
- Size: 52" x 70"



CAMEL



BLACK



WINE



ROYAL



DARK GREEN



NAVY



RED



PINK



ZEBRA (K3010/P)



CHEETAH (K3010/P)



FREE RETAIL PACKAGING



<b>K3010/P</b>	<b>POLAR FLEECE SLEEVED BLANKET</b>		
QUANTITY	72pcs	144pcs	288pcs (3A)
Blank (pcs)	\$21.98	\$19.98	\$17.98
Emb 5k sts	\$27.96	\$24.76	\$21.96

# NAPA BLANKETS

- 100% polyester faux suede, reversible self-hemmed throw,
- super plush blanket with soft faux lambs wool, invisible zipper
- for ease of embellishment, decorative presentation cord.
- Size: 50" x 60"

<b>K8000</b>		<b>DELUXE LAMBSWOOL THROWBLANKET</b>		
QUANTITY	72pcs	144pcs	288pcs (3A)	
Blank (pcs)	\$35.98	\$33.98	\$31.98	
Emb 5k sts	\$41.96	\$38.76	\$35.96	



**BROWN**



**COBALT BLUE**



**BLACK**



**WINE**



**CAMEL**



**ADDITIONAL CHARGE FOR RETAIL PACKAGING**



**K8000**





# NAPA BLANKETS

<b>K2100</b>		<b>TRAVEL WATER PROOF PICNIC BLANKET</b>		
QUANTITY	72pcs	144pcs	288pcs (3A)	
Blank (pcs)	\$19.98	\$17.98	\$15.98	
Emb 5k sts	\$25.96	\$22.76	\$19.96	

- One side water proof, one side polar fleece
- Easy carry handle
- Embroidery friendly pocket
- Velcro Secured flap for embroidery logo
- Folded size only approximately 12" x 3.5" x 7" opening to 50"x 60"



BLACK



NAVY



GRAY



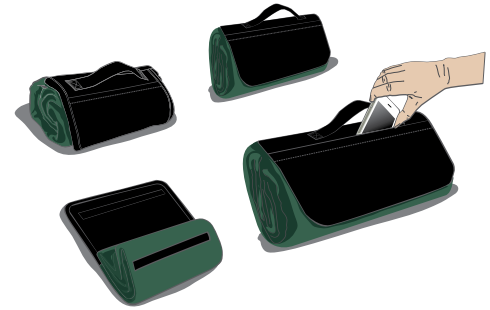
RED



FOREST GREEN



ROYAL



EASY ACCESS FOR EMBROIDERY



<b>K9100</b>	<b>4 IN 1 RECREATION BLANKET</b>		
QUANTITY	72pcs	144pcs	288pcs (3A)
Blank (pcs)	\$23.98	\$21.98	\$19.98
Emb 5k sts	\$29.96	\$26.76	\$23.96

# NAPA BLANKETS

## 4 IN 1 RECREATION BLANKET

4 in 1 Recreation Blanket... Sleek multi purpose recreation blanket with taped edging unfolds to one side waterproof and one side soft polar fleece. Comes with a carrying handle and embroidery friendly zippered pouch which contains a fold out hood with draw strings so you can convert to a poncho with snaps to wear for protection.

Blanket, Cushion, Poncho, Table Cover... this product is a must have for any outdoor event.

Folded size only approximately 12" x 3.5" x 7" opening to 50"x 60"

US PATENT # 690,486  
INTERNATIONAL PATENT PENDING  
CANADA PATENT PENDING



FOREST GREEN

NAVY



ROYAL

BLACK



GRAY

CARDINAL

RED

CUSHION

RAINCOAT



PORTABLE

PONCHO



# BAGS



NATURAL

## BN01902 NATURAL COTTON TOTE

100% natural cotton tote bag (110 grams/3.85 ounce). Great imprint area to show off multi color logos. A perfect alternative to plastic bags.

BN01902		Size: 16 1/2" x 15" Case pack w/wt: 250pc/24lbs Case dim: 18" x 16" x 11"			
QUANTITY	200	400	800	1,600 (4A)	
Blank (pcs)	\$1.68	\$1.58	\$1.48	\$1.38	
Silk screen (9"x9")	\$2.18	\$2.08	\$1.96	\$1.84	



RED

## BN01904 COTTON TOTE

100% natural cotton tote bag (140 grams/5.0 ounce). Large open compartment and 16" shoulder straps.



BLACK



RED



KELLY

BN01904		Size: 15" x 15" Case pack w/wt: 250pc/33lbs Case dim: 17" x 16" x 11"			
QUANTITY	200	400	800	1,600 (4A)	
Blank (pcs)	\$2.18	\$2.08	\$1.98	\$1.88	
Silk screen (9"x9")	\$2.68	\$2.58	\$2.46	\$2.34	



LIME



BLACK



ROYAL



RED



LIME



NATURAL



PINK

## BN09900 NON WOVEN TOTE

Eco-friendly reusable tote bag. Features a large main compartment. Includes re-enforced 22" shoulder straps. Made from 80 gsm non woven polypropylene.

BN09900		Size: 15 1/2" x 15" x 1/2" Case pack w/wt: 200pc/25lbs Case dim: 17" x 16" x 15"			
QUANTITY	200	400	800	1,600 (4A)	
Blank (pcs)	\$1.28	\$1.08	\$0.98	\$0.88	
Silk screen (9"x9")	\$1.78	\$1.58	\$1.46	\$1.34	



BAGS



ORANGE



PINK



RED



NATURAL



ORANGE



LIME



BLACK



NAVY



ROYAL



PURPLE



HUNTER GREEN

**BN09904 BOLT SHOPPING BAG**

Heavy duty non woven shopping bag. Made from eco-friendly material and is reusable. Features a large main compartment with an 8 1/2" gusset and hard bottom and reinforced 22" shoulder straps. Made from 100 gsm non woven polypropylene.

**BN09904**

Size: 12 1/2" x 13 3/4" x 8 1/2"  
Case pack w/wt: 200pc/60lbs  
Case dim: 27" x 16" x 23"

QUANTITY	200	400	800	1,600 (4A)
Blank (pcs)	\$1.88	\$1.78	\$1.68	\$1.58
Silk screen (8"x5 1/2")	\$2.38	\$2.28	\$2.16	\$2.04



ROYAL



RED



NATURAL



LIME



RED

**BN09909**

Size: 12" x 16" x 6"  
Case pack w/wt: 200pc/27lbs  
Case dim: 17" x 14" x 23"

QUANTITY	200	400	800	1,600 (4A)
Blank (pcs)	\$1.28	\$1.18	\$1.16	\$1.08
Silk screen (7"x9")	\$1.78	\$1.68	\$1.64	\$1.54

**BN09909 NON WOVEN SHOPPING BAG**

Eco-friendly reusable large shopping tote bag. Features an over sized main compartment with 8" gusset. Includes re-enforced 24" shoulder straps. Made from 80 gsm non woven polypropylene.



PURPLE



BLACK



RED



NATURAL



NAVY



HUNTER GREEN



WHITE



PINK



ORANGE



ROYAL



LIME

**BN09912 BIG BOLT SHOPPING BAG**

Heavy duty non woven shopping bag. Made from eco-friendly material and is reusable. Features a large main compartment with a 10" gusset and hard bottom and reinforced 22" shoulder straps. Made from 100 gsm non woven polypropylene.

**BN09912**

Size: 15" x 13" x 10"  
Case pack w/wt: 100pc/29lbs  
Case dim: 16" x 14" x 19"

QUANTITY	200	400	800	1,600 (4A)
Blank (pcs)	\$1.98	\$1.88	\$1.78	\$1.68
Silk screen (8"x5 3/4")	\$2.48	\$2.38	\$2.26	\$2.14

# BAGS



## BN10908 NEOPRENE BAG

Neoprene lunch tote holds and insulates your meal. Features a handle for easy carrying, machine washable (cold water setting), drip dry and stores flat.

<b>BN10908</b>	Size: 12" x 11" x 6 1/2"			
	Case pack w/wt: 50pc/18lbs Case dim: 24" x 13" x 12"			
QUANTITY	50	100	250	500 (4A)
Blank (pcs)	\$7.28	\$6.98	\$6.68	\$6.38
Silk screen (4"x6")	\$7.78	\$7.48	\$7.16	\$6.84



## BN03914 6 PACK COOLER BAG

Dual compartment deluxe lunch cooler bag with lower insulated compartment. Upper compartment will hold your other items that do not require insulation. Adjustable shoulder strap included. Made from 600D polyester.

<b>BN03914</b>	Size: 10 1/2" x 9" x 6 1/4"			
	Case pack w/wt: 40pc/25lbs Case dim: 26" x 11" x 21"			
QUANTITY	50	100	250	500 (4A)
Blank (pcs)	\$7.28	\$6.98	\$6.68	\$6.38
Silk screen (3"x5")	\$7.78	\$7.48	\$7.16	\$6.84

## BN09913 INSULATED COOLER TOTE BAG

Eco-friendly insulated reusable hot/cold lunch bag made from premium 100 gsm non woven material. Features a zipper closure, 7" side gusset pocket, dual reinforced 18" handles & an insulated liner that keeps food & beverages hot or cold.



<b>BN09913</b>	Size: 12" x 8" x 7"			
	Case pack w/wt: 50pc/16lbs Case dim: 28" x 13" x 9"			
QUANTITY	50	100	250	500 (4A)
Blank (pcs)	\$2.88	\$2.78	\$2.68	\$2.58
Silk screen (5"x7")	\$3.38	\$3.28	\$3.16	\$3.04

## BN00958 CINCH BAG

Cinch bag drawstring backpack made from lightweight yet extremely durable 210D nylon. Use as a shoulder sling or as a backpack. Bottom corner grommets for reinforcement.



<b>BN00958</b>	Size: 13" x 16 3/4"			
	Case pack w/wt: 200pc/21lbs Case dim: 18" x 15" x 13"			
QUANTITY	200	400	800	1,600 (4A)
Blank (pcs)	\$1.68	\$1.58	\$1.48	\$1.38
Silk screen (9"x9")	\$2.18	\$2.08	\$1.96	\$1.84

BAGS



GRAY



RED



ROYAL

Durable backpack features a large main zippered compartment, front zippered compartment with interior organization, headphone port and side mesh pockets. Includes padded, adjustable shoulder straps for added comfort. Made from 600D polyester.

**BN05917** MULTI POCKET BACKPACK

<b>BN05917</b>		Size: 17" x 12" x 6" Case pack w/wt: 25pc/25lbs Case dim: 13" x 18" x 18"			
QUANTITY		50	100	250	500 (4A)
Blank (pcs)	\$13.98	\$13.58	\$12.98	\$11.98	
Silk screen (5"x5")	\$14.48	\$14.08	\$13.46	\$12.44	
EMBROIDERY					
QUANTITY		50	100	250	500 (4A)
10k stitches	\$26.48	\$23.08	\$19.48	\$17.58	



RED



ROYAL



BLACK



RED

<b>BN07991</b>		Size: 19" x 7" x 6 1/2" Case pack w/wt: 50pc/38lbs Case dim: 21 5/8" x 11 1/2" x 15 3/4"			
QUANTITY		50	100	250	500 (4A)
Blank (pcs)	\$8.08	\$7.68	\$7.48	\$6.98	
Silk screen (6"x4")	\$8.58	\$8.18	\$7.96	\$7.44	
EMBROIDERY					
QUANTITY		50	100	250	500 (4A)
10k stitches	\$20.58	\$17.18	\$13.98	\$12.58	

**BN07991** SPORT DUFFLE BAG

Everyday use duffel bag is designed for runs to the gym or after school practices. Main large compartment has enough room to hold your clothes, shoes and gear. Also includes front zippered pocket to organize your accessories.



BLACK

**BN07957** DELUXE GYM BAG

Premium sports duffel bag opens wide to reveal a roomy interior that can hold a change of clothes and exercise gear. Sized to fit in a gym locker. Features a separate wet/dry shoe tunnel that keeps footwear away from your clothes and other belonging. Made from durable ripstop nylon with 600D accents.

<b>BN07957</b>		Size: 22" x 11" x 13 3/4" Case pack w/wt: 20pc/35lbs Case dim: 21 5/8" x 19 3/4" x 11 7/8"			
QUANTITY		50	100	250	500 (4A)
Blank (pcs)	\$22.98	\$21.98	\$20.98	\$19.98	
Silk screen (7"x4")	\$23.48	\$22.48	\$21.46	\$20.44	
EMBROIDERY					
QUANTITY		50	100	250	500 (4A)
10k stitches	\$35.48	\$31.48	\$27.48	\$25.58	



## STYLE INDEX

2000s	10	6110S/V	54	8000	30
2000t	10	6120	53	8010S	59
2001	11	6200US	31	8010T	59
2013	11	6210	55	8020	46
2900	11	6213	55	8050S	48
3000	12	6230	54	8050T	48
3008	12	6300BC/N	49	8053	48
3009	12, 37	6420	29	8055	30
3020	13	6800S/T	61	8058	30
3020Y	62	6809	37, 61	8070S/T	46
3023	13	6810	61	8080	47
3033	13	6819	NEW COLOR 37, 61	8082	47, 50
3300	14	7040	72	8090S	60
3410	14	7041	72	8090T	60
3913	14	7110	78	8100	41
3913Y	62	7120	73	8100Y	63
3920	15	7121	73	8120	73
4013	15, 20	7131	74	8130S/T	42, 51
4130	21	7140	74	8140S	42
4160	21	7141	74	8140T	43
4213	22	7150	75	8150	46
4300	22	7151	75	8160	43
4710	24, 69	7155	75	8210N	56
4720d	NEW ITEM 24, 69, 80	7160	72	8210S	56
4730	24, 69, 78	7170	76	8210SY	63
4740	NEW ITEM 25, 69, 84	7180	76	8210T	57
4750	25, 70	7181	77	8213S	57
4760	25, 69	7182	77	8213T	57
4900	23	7190	79	8220	50
5100	26	7210/D	NEW COLOR 80	8230	50
5110B	26	7215	81	8240	50
5110C	27	7220	80	8280	34
5110S	26	7225	81	8300	43
5110W	27	7231	81	8310	44
5120	27	7240	81	8311	34
5400C	28	7241/D	NEW ITEM 82	8313	44
5400S	28	7250	NEW COLOR 82	8320	35
5400SY	63	7255	82	8321	35, 73
5400W	28	7280/D	NEW COLOR 82	8330	34, 45
5410	29	7321	79	8340	36
5600L	51	7341/D	NEW ITEM 78	8350	36
6000S/T	52	7351	79	8360	32
6009	37	7440	NEW COLOR 84	8361	33
6010S/V	58	7451	NEW ITEM 85	8363	32
6010T/V	58	7480	NEW COLOR 85	8368	33
6090	58	7541	70	8380	45
6100B/C	52	7550	71	8410	29, 45
6100S/W	53	7551	71	8810	47
6101	49, 54	7580	70	8830	47

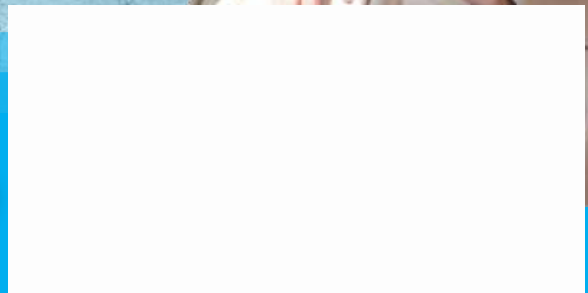
## STYLE INDEX

8900S	38	BN05917	121	K8000	115
8900T	38	BN07957	121	K9100	117
8910	38	BN07991	121	SF01	103
8913	38	BN09900	118	SF02	103
8920	39	BN09904	119	ST03	102
8940	<b>NEW COLOR</b> 39	BN09909	119	ST04	23, 102
8950	40	BN09912	119	ST05	102
8951	40	BN09913	120	ST06	102
8980	<b>NEW ITEM</b> 36	BN10908	120	TR01	103
8990	40	FL01	101	TR03	103
9100	92	FL02	101	TR04	23, 103
9120	92	FL03	101	TR05	103
9130	92	FL04	23, 101	TR06	103
9130Y	62	FL05	101	TR07	103
9150	<b>NEW ITEM</b> 93	FL07	101	TR08	23, 103
9180S	93	FL08	23, 101	W1600	106
9180ST/TY	62	FL09	101	W1700	106
9180T	93	FL10	101	W1700US	31
9900	19	FL11	101	W1710	107
A9324	104	FL12	101	W1710US	31
A9328	104	HR01	102	W1711	107
A9420	104	HR02	102	W1720	108
A9730	105	HR03	102	W1721	108
A9830GG	83, 91, 105	HR04	23, 102	W1730	108
A9830MO	91, 105	HR05	102	W1740	109
AS01	100	HR06	102	W1741	77, 109
AS04	100	HR07	102	W1745	<b>NEW ITEM</b> 71, 109
AS05	100	HR08	102	W1800	110
AS06	100	HT01	64	W1810	110
AS07	100	HT02	64	W1850/P	111
AS08	100	HT03	64	W1900	110
AS09	100	HT11	65	WFM03	103
B0006	86	HT12	65	WFM04	103
B1007	86	HT13	65	ZK130	<b>NEW COLOR</b> 16
B1008	86	HT21/HT22	66	ZK131	<b>NEW COLOR</b> 16
B1213	87	HT23/HT24	<b>NEW COLOR</b> 66	ZK132	<b>NEW ITEM</b> 17
B1311	87	HT25/HT26	<b>NEW COLOR</b> 66	ZK210	17
B1520	89	HT31	67	ZK213	<b>NEW ITEM</b> 17
B1524	89	HT32	67	ZK413	<b>NEW ITEM</b> 19, 20
B1530	89	HT33	67	ZK600	<b>NEW ITEM</b> 19
B1817	88	HT34	67	ZK641	<b>NEW ITEM/ COLOR</b> 18, 70
B1818	88	HT41	68	ZK810	<b>NEW ITEM</b> 19
B2311	83, 90	HT42	68		
B2520	83, 90	K1010	77, 86		
B2817	83, 90	K2000	112		
BN00958	120	K2100	116		
BN01902	118	K2802	113		
BN01904	118	K3000	114		
BN03914	120	K3010/P	114		





# KC CAPS



[www.kcheadwear.com](http://www.kcheadwear.com)

ASI 58760 PPAI 165695 SAGE 63954 UPIC KCCAPS

ATLANTA

CHICAGO

DALLAS

LOS ANGELES

NEW YORK

TORONTO