



Quality. Value. Selection. Protection

1649 Sands Place, Ste J
 Marietta, GA 30067
 Toll Free: 866.998.2649
 Phone: 770.988.9988
 Fax: 770.988.0388

Style 402-ST-LM



This [Hi Vis Safety Raingear](#) is ANSI Class 3 compliant. The waterproof rainsuit has an attached hood. It is made with a High Visibility Polyurethane Coated Woven Polyester. Our High Visibility Rainsuits feature 3M™ Scotchlite™ Reflective Material. This Safety Rainsuit is a jacket and pants combo.

402-ST-LM High Visibility Safety Features

- ANSI/ISEA Type R Class 3 Compliant
- 2" Retro reflective Tape with 360 Degree Reflective Coverage
- High Visibility Lime - a.k.a. Fluorescent Yellow-Green

Reflective Material

- 3M™ Scotchlite™ Reflective Material - 8906 Silver Fabric Trim

Jacket and Pant Material

- Waterproof
- Wind Resistant

Outer Material

- 180 gsm 300D Oxford Polyester with Polyurethane (PU) Coating

Additional Features

- Jacket & Pants Combo
- Snap Closure with Storm Flaps
- Drawstrings with pulls to tighten hood
- 2 Slash Pockets at the Waist
- Cell phone pocket
- Raglan Sleeves with Elastic Cuffs
- Draw String Hem
- Pants have elastic waistband with drawstring
- Snaps at bottom for adjustment
- Pass through pockets

3M™ Scotchlite™ Reflective Material – 8906 Silver Fabric Trim is certified to meet ANSI/ISEA 107-2020 clause 9.1 and 9.2 for coefficient of retroreflection.

Reflective Material Certifications

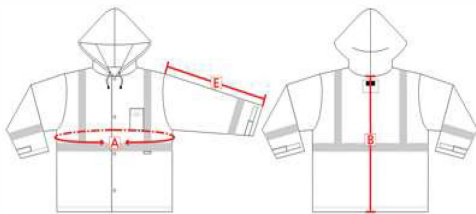
[2015_Fabric_OxfordPU_LM_HKSL1605070885TX.pdf](#)

Reflective Material Certifications

[3M™ Scotchlite™ Reflective Material - 8906 Silver Fabric Trim](#)

Technical Data Sheets

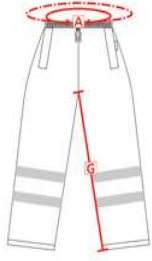
[3M™ Scotchlite™ Reflective Material - Silver Fabric Trim Technical Data Sheet](#)



402 High Visibility Rainsuit Coat Sizing Chart

	A	B	E	
	Jacket Exterior Chest Circumference	Center Back Length	Sleeve Length	SKU
SM	48	33	25-1/2	4020P0B
MD	52	33	25-1/2	4020P0C
LG	56	34	26	4020P0E
XL	60	34	26-1/2	4020P0G
2X	64	35	27	4020P0J
3X	68	35	27-1/2	4020P0L
4X	72	36	28	4020P0N
5X	76	36	28-1/2	4020P0Q
6X	80	36	29	4020P0S
+/-	1	1	1	

All measurements are in inches to the exterior of the garment.



VEA-402 High Visibility Rainsuit Pants Sizing Chart

	A		G
	Waist Stretched	Waist Relaxed	Inseam
SM	48	25	28
MD	49	26	29
LG	50	27	29
XL	51	28	30-1/2
2X	52	29	32
3X	54	31	33-1/2
4X	55	32	34-1/2
5X	56	33	35-1/2
6X	57	34	36-1/2
+/-	1	1	1

All measurements are in inches to the exterior of the garment.